



**SURC**

# 1/10 Electric DRR-01 Car Kit

## 2W Rear Wheel Drive

### Instruction Manual



Powered By:

**SURC**





## Introduction:

RDD-01 is a professional 1:10<sup>th</sup> front wheel drive car and should be built by aged 14 years or over or that they had experience building and operating R/C model cars before. This is not a toy intended for use by beginners or by children without any supervision of a knowledgeable adult. Please read the instruction manual carefully before building.

Race opt should not be liable for any loss, injury or damages, whether direct, indirect, special, incidental, consequential, arising from the use, misuse, abuse of this product or accessories required to operate this product.

## Warnings:

- ⊙ This product is not intended for those ages under 14 year without any adult supervision.
- ⊙ Assemble this kit only in places away from the reach of children.
- ⊙ Exercise car when using tools and sharp instrument and take care some parts that may have sharp edges when building.
- ⊙ Please do not touch any electronic equipment on the model such as motor and speed controller that having higher temperatures after the operation. Otherwise, it may burn yourself seriously by touching them. Better to allow 10~15 minutes to let any electronic equipment cool down.
- ⊙ Please complete a successful pre-run check of your radio equipment and model before the run. Make sure to keep the wheels of the model off the ground when checking the operation of the radio equipment.
- ⊙ When on the model, please always turn on the transmitter before turn on the receiver in the car. When off the model, please always turn off the receiver before turn off the transmitter. Otherwise, the model may become uncontrollable and cause serious damage.
- ⊙ Disconnect the battery pack before storing your model.
- ⊙ Do not get overcharge for the battery or leave battery unattended while charging. Never let children charge the battery without adult supervision.
- ⊙ Do not operate it on public places, roads or areas where its operation can conflict with or disrupt pedestrian or vehicular traffic.
- ⊙ Do not use your model as shown below:

In places where children and people gather	In rain, wind snow or darkness condition
In areas where loud noises can disturb others	At anytime your line of sight to the model may be obstructed or impaired in any way





## Electrical Precautions:

- ⊙ Please do not allow any metal part to short circuit the battery or any electronic part using inside the car kit.
- ⊙ Never put batteries into fire.
- ⊙ Use the recommended charger for the transmitter battery and battery for electronic speed control. Please follow the charging instructions carefully. Please do not over charge the battery or choose the wrong charging mode. It becomes dangerous that causes the explosion and lead to the fire. If battery becomes extremely hot during the charging, please seek the advice from or get replacement from the corresponding battery supplier.
- ⊙ Please unplug charger when not in use.
- ⊙ When not using RC model, please always disconnect and remove the battery.
- ⊙ Low battery may result in loss of control. Please stop running the car at once when you find its speed start to slow down.
- ⊙ After use the battery, the battery remains heat and please recharge it after the battery is cool down.
- ⊙ Never use damaged wires that are dangerous and cause short circuits and may lead to the fire

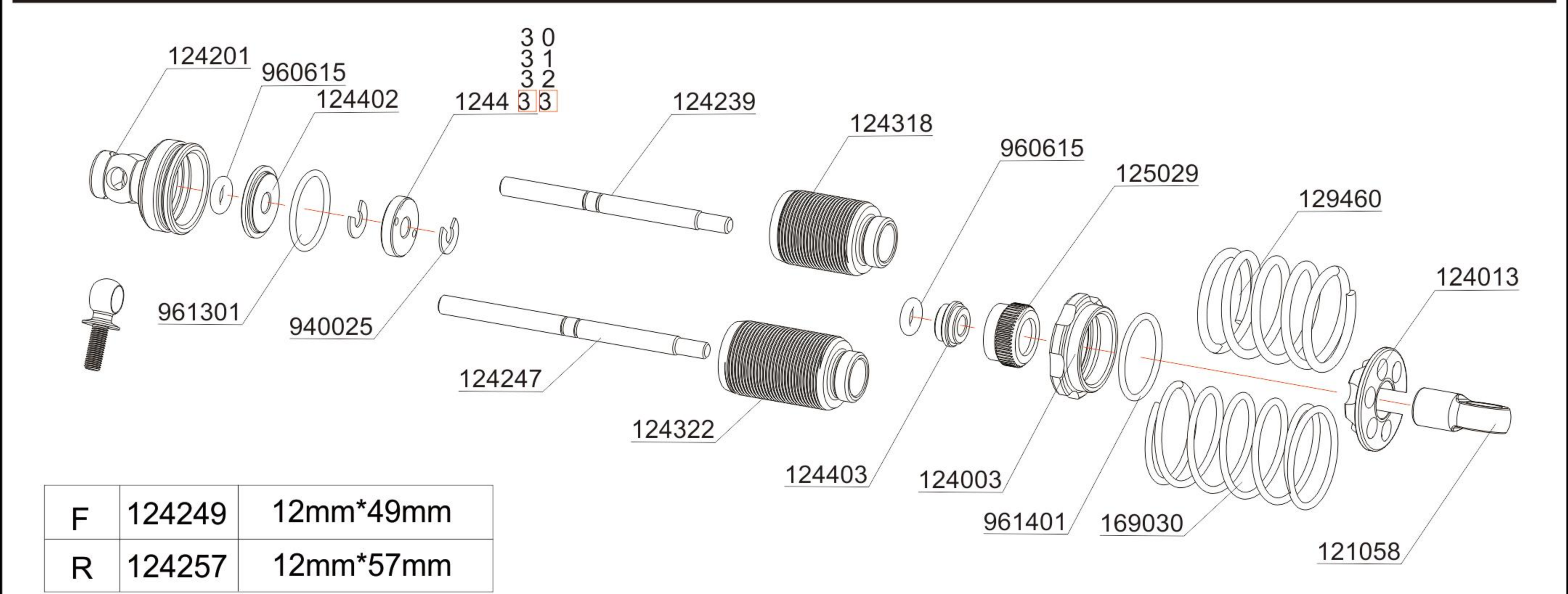
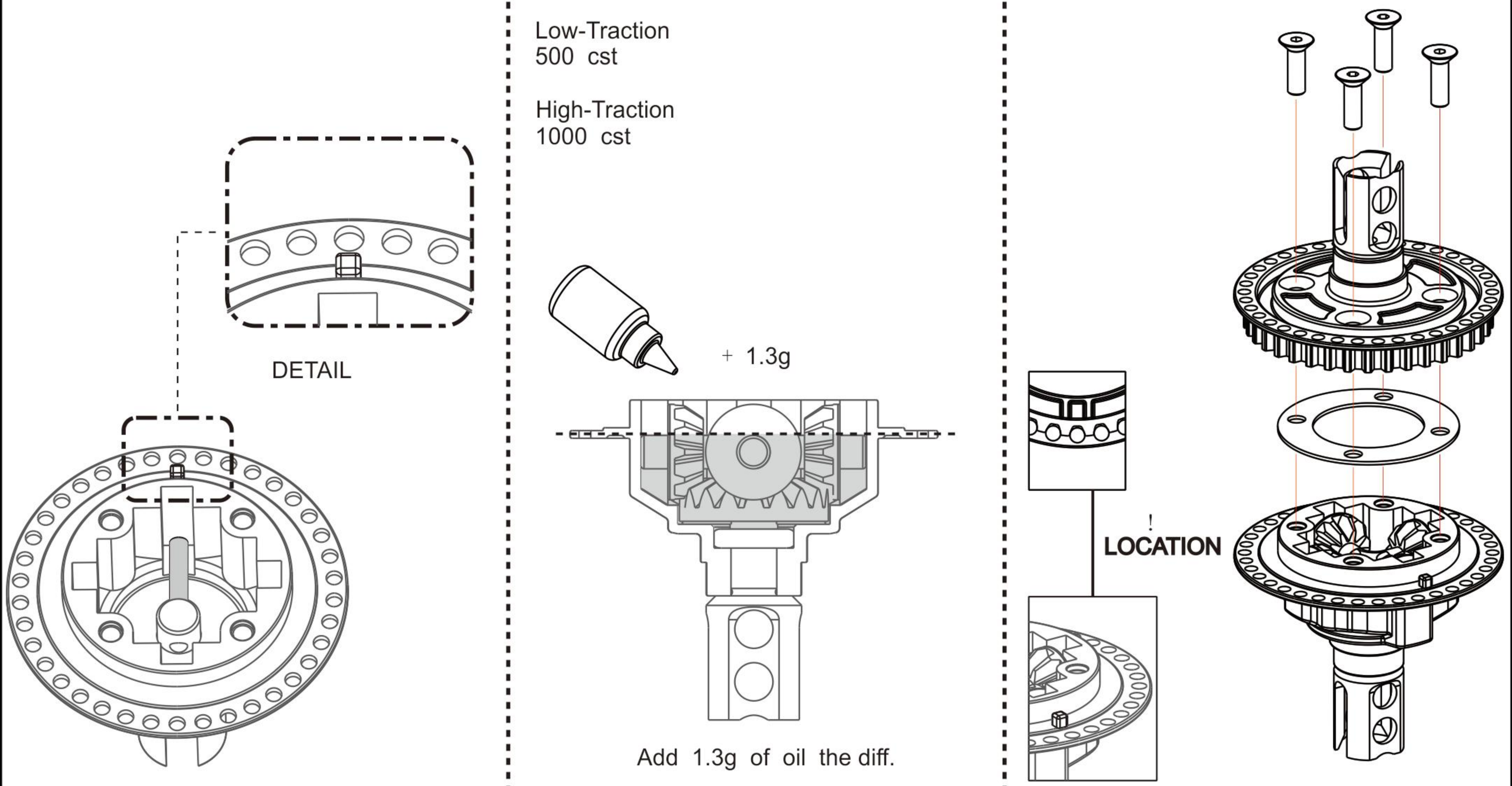
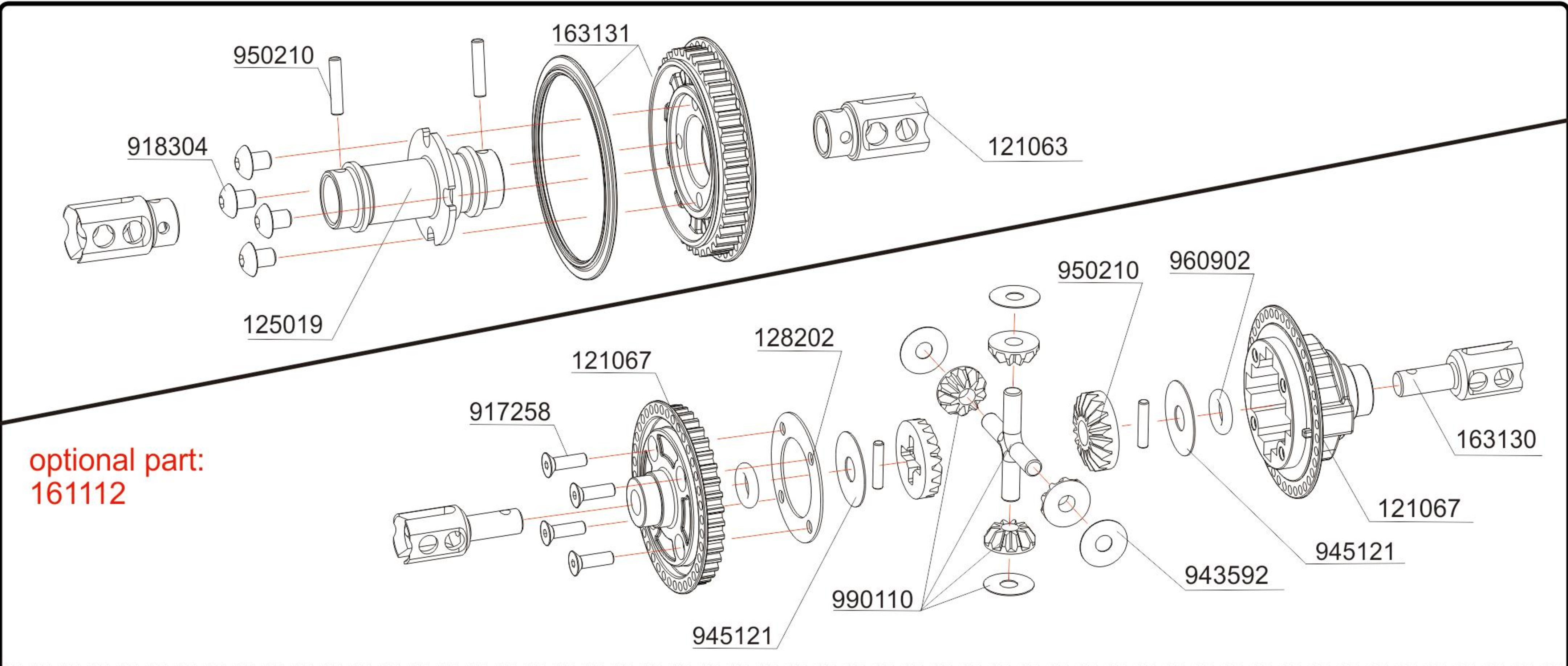
## Other Equipment Needed (not included):

Radio transmitter & receiver	Battery for transmitter
Electronic speed control	Steering Servo
540 Type brushes or brushless motor	Pinion Gear (48pitch/64pitch)
190mm body shell	7.4V Nimh or Lipo Battery
Touring Car Tire set	Battery charger

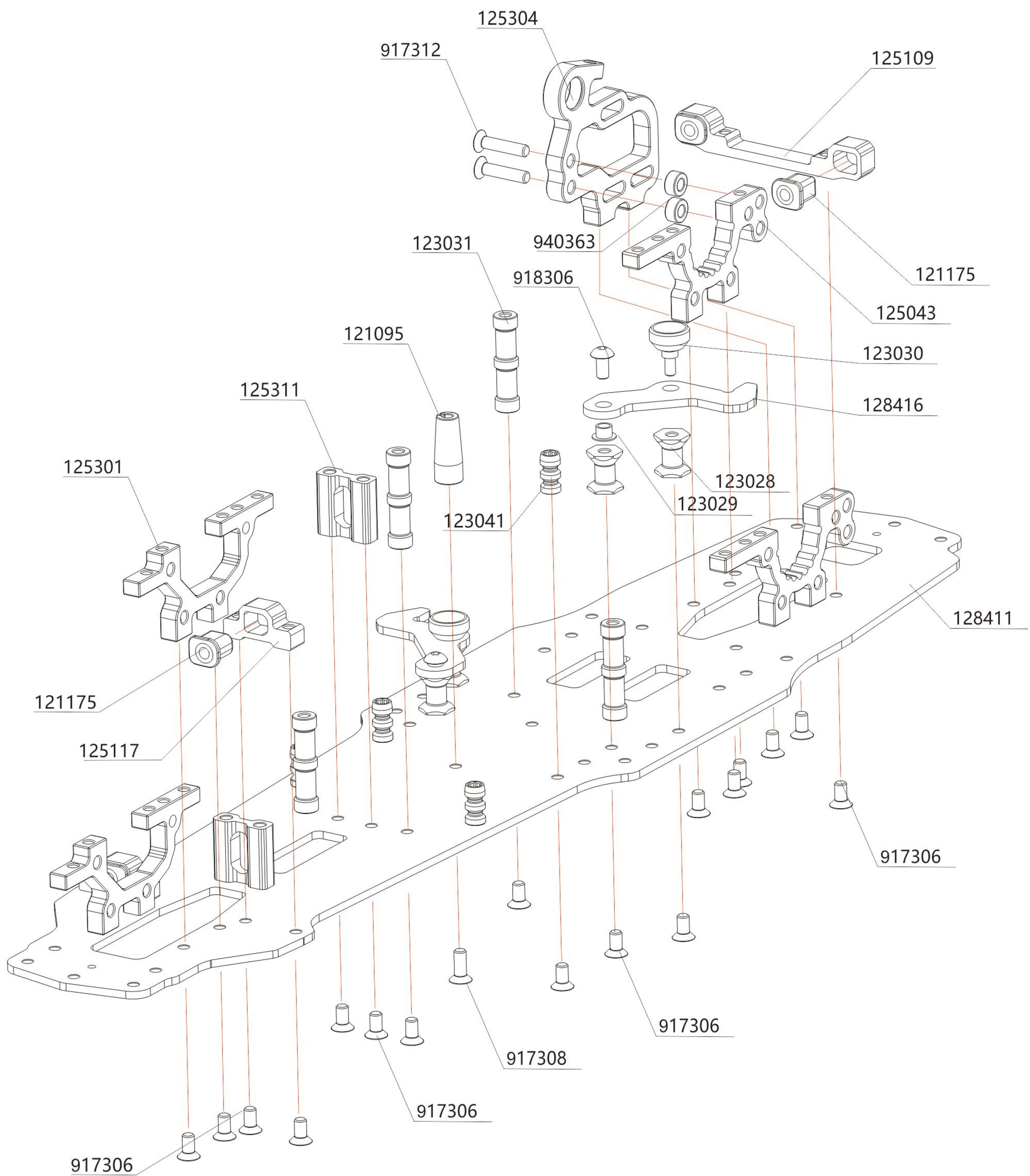
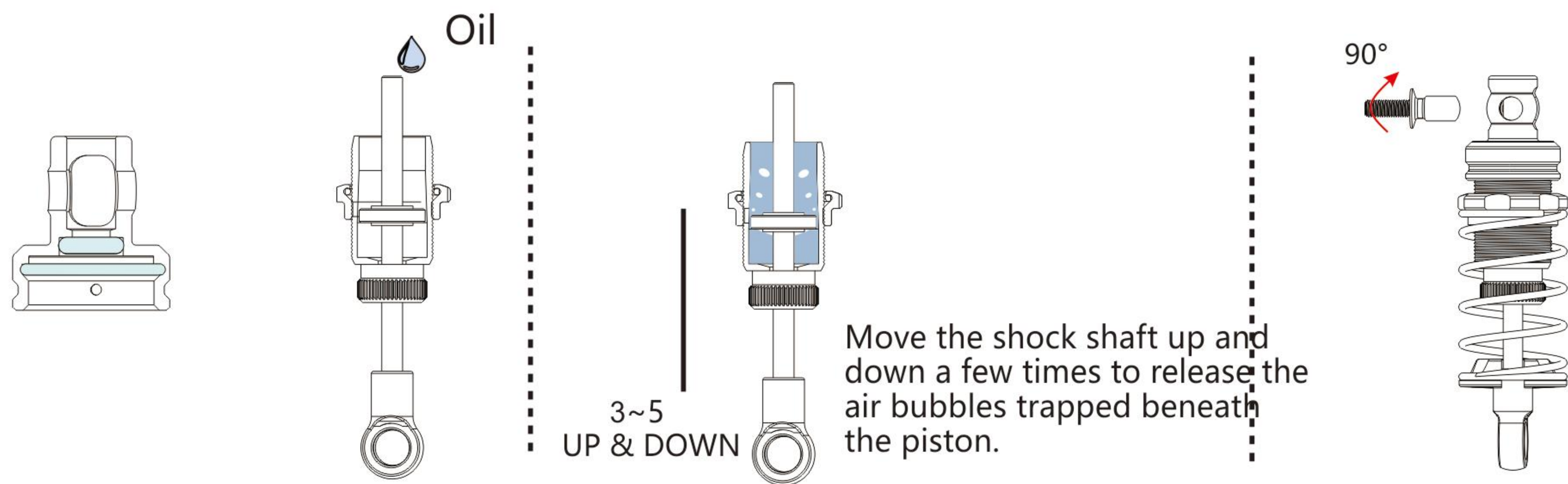
## Tools Needed (not included):

1.5mm, 2.0mm, 2.5mm allen wrench	5.0mm, 5.5mm, 7.0mm hex socket wrench
Modelers craft knife	Turnbuckle wrench
Calipers/Ruler	Camber gauge
Instant glue/Thread lock glue	Shock and Diff Oil
Thrust, Diff and Joint grease	Paint for body shell

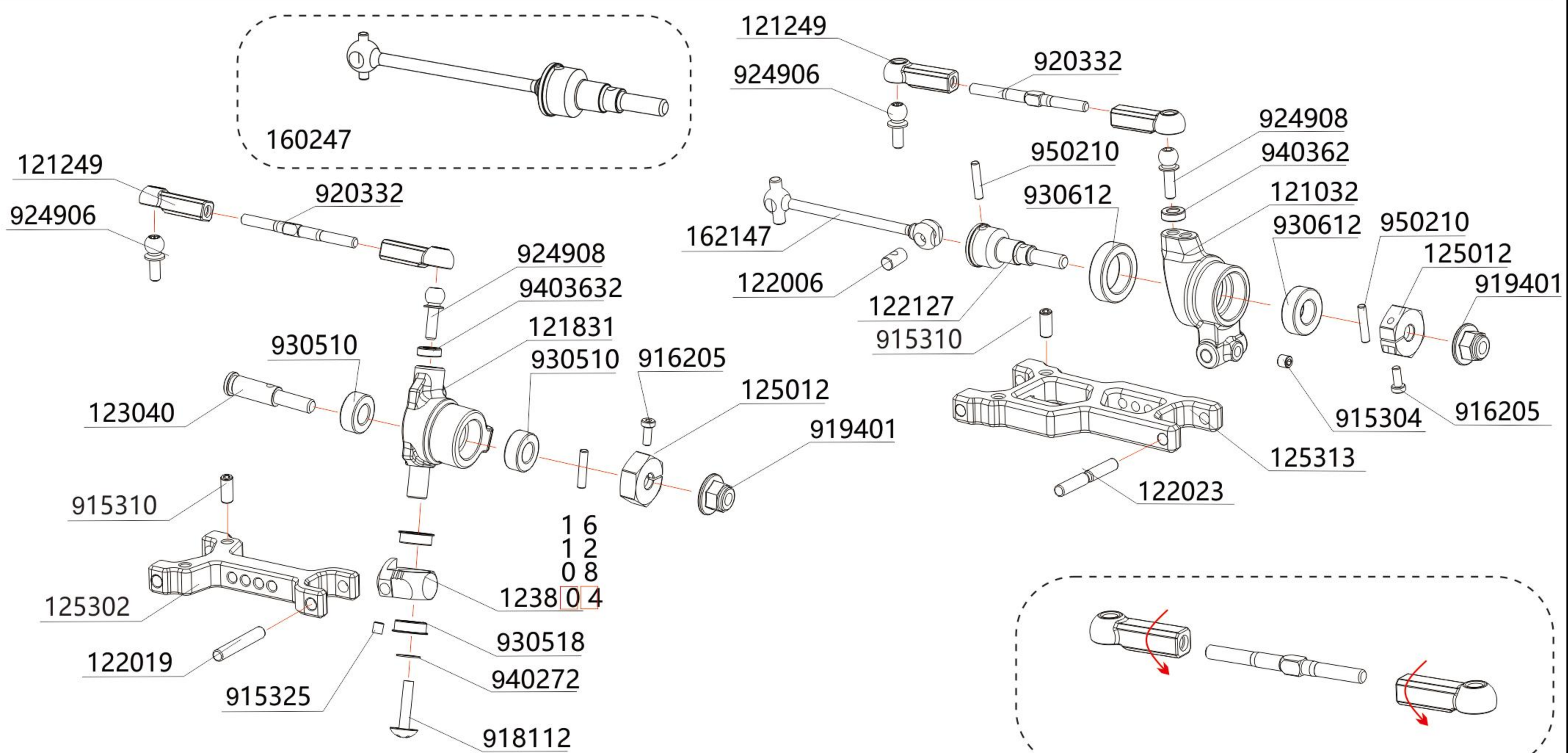
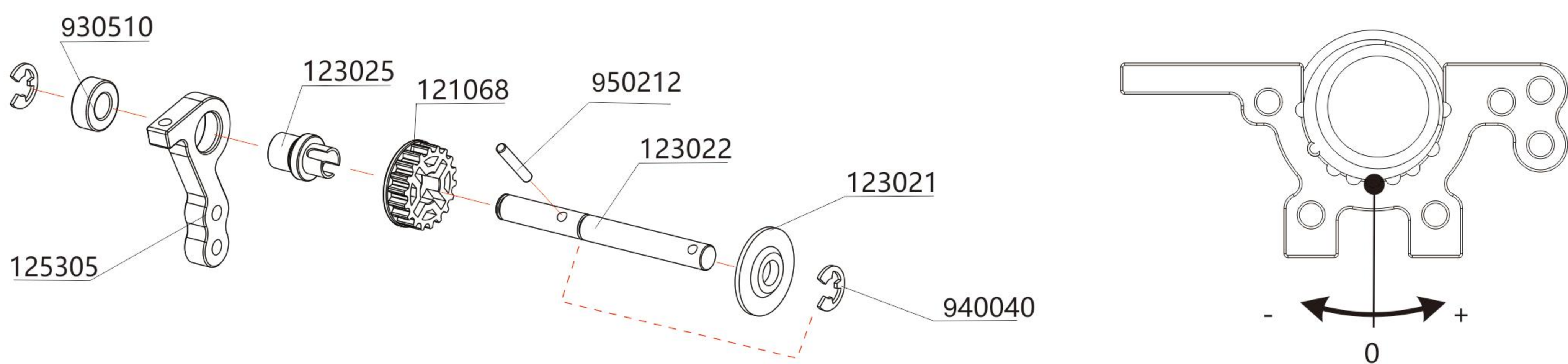
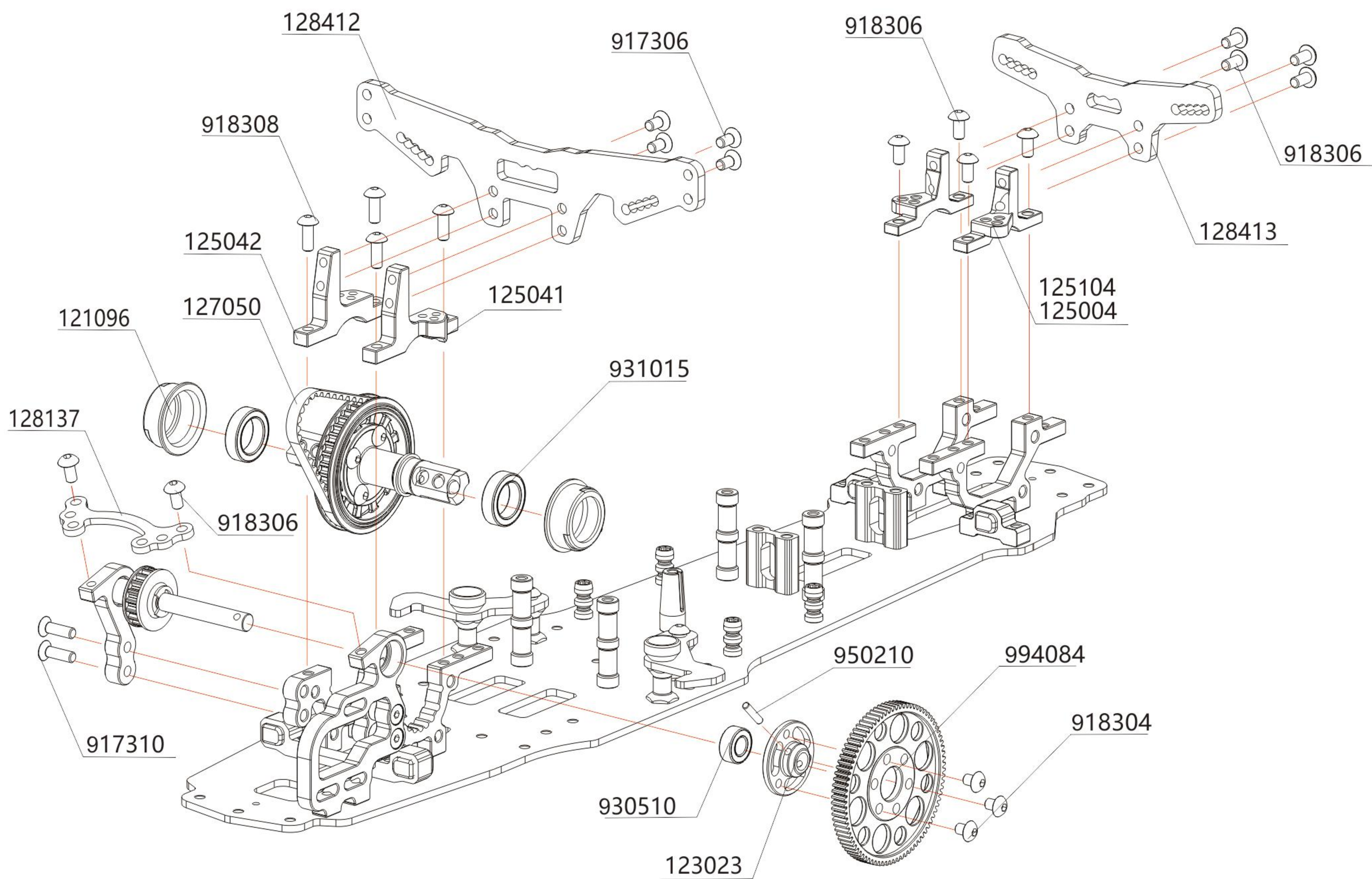




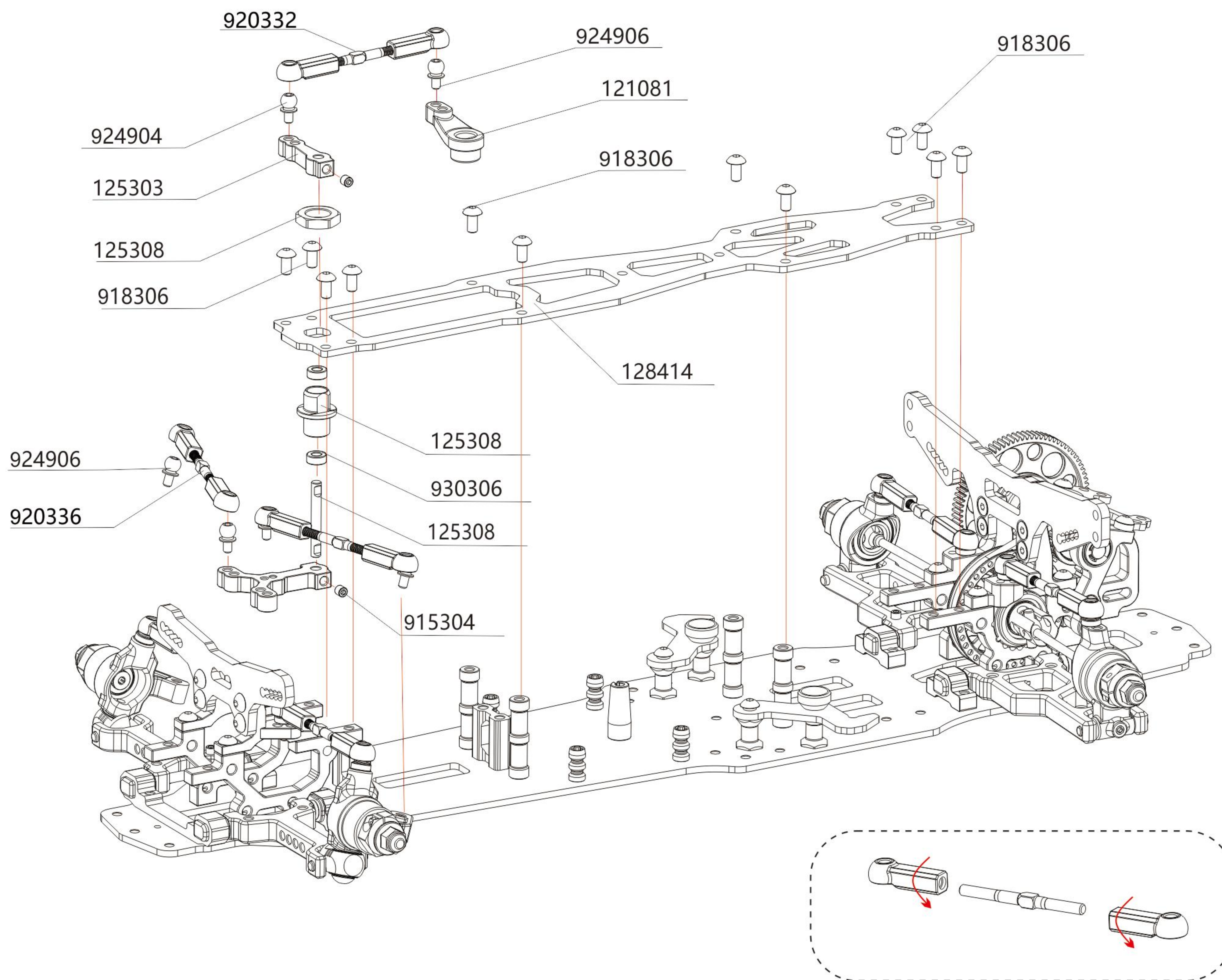
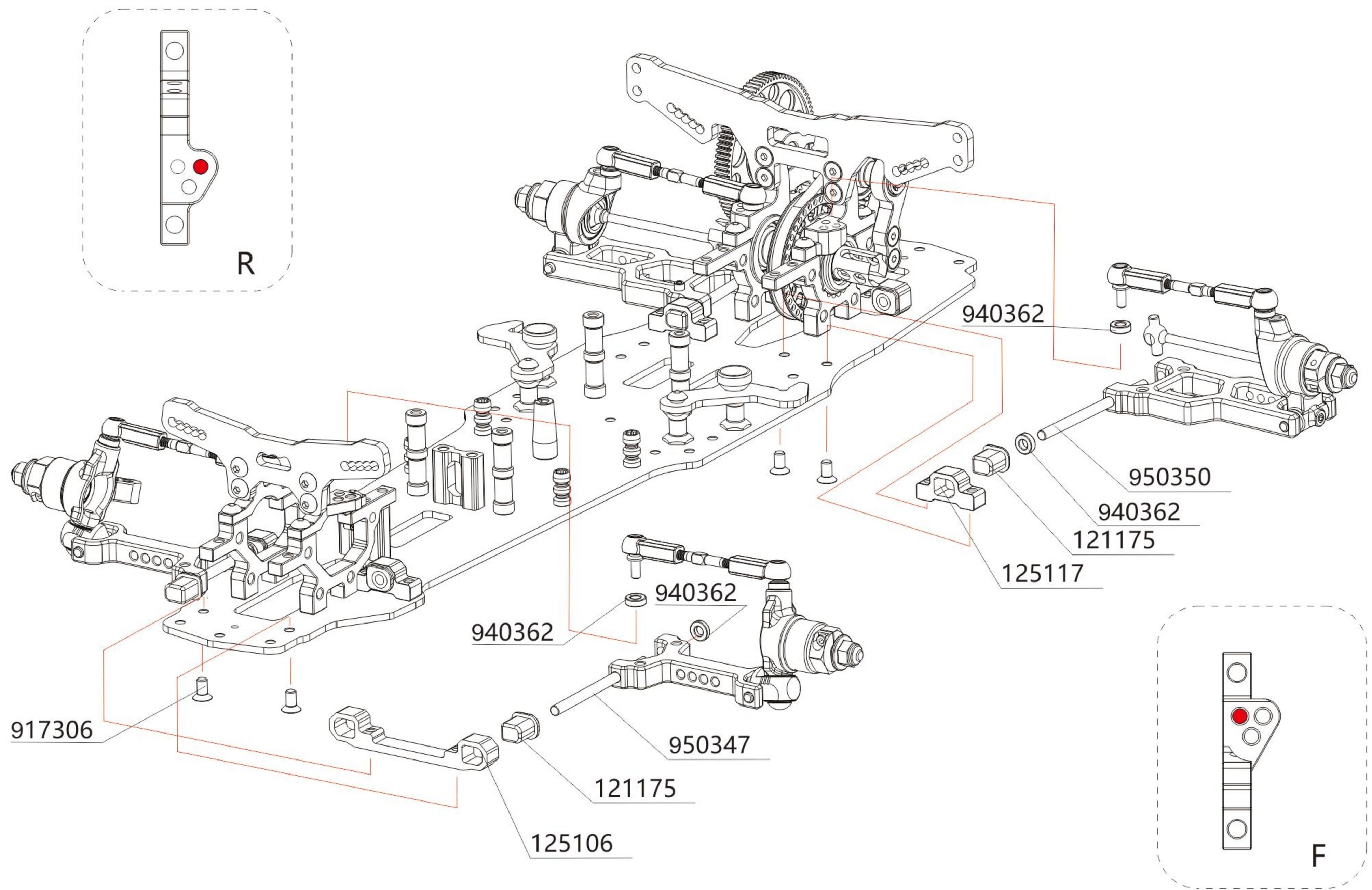




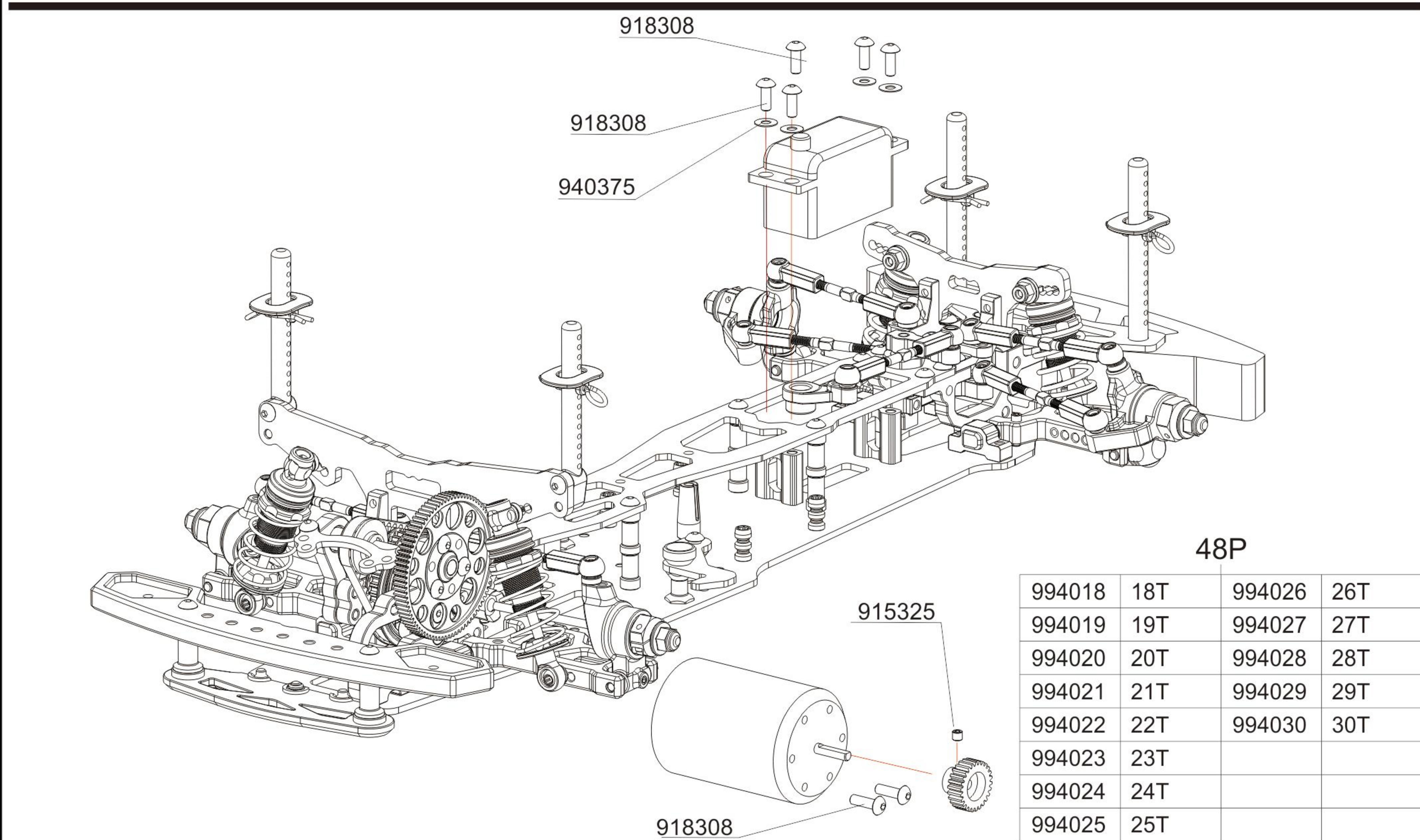
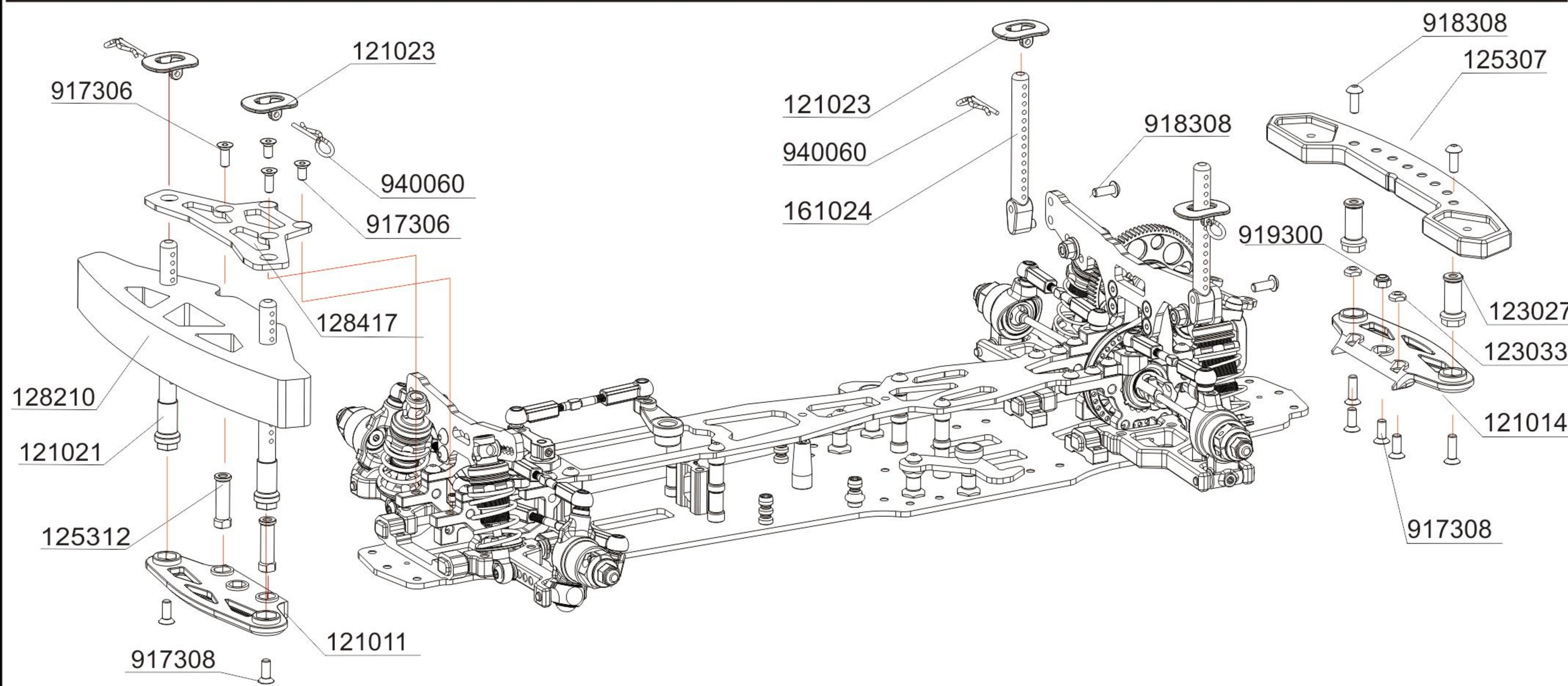
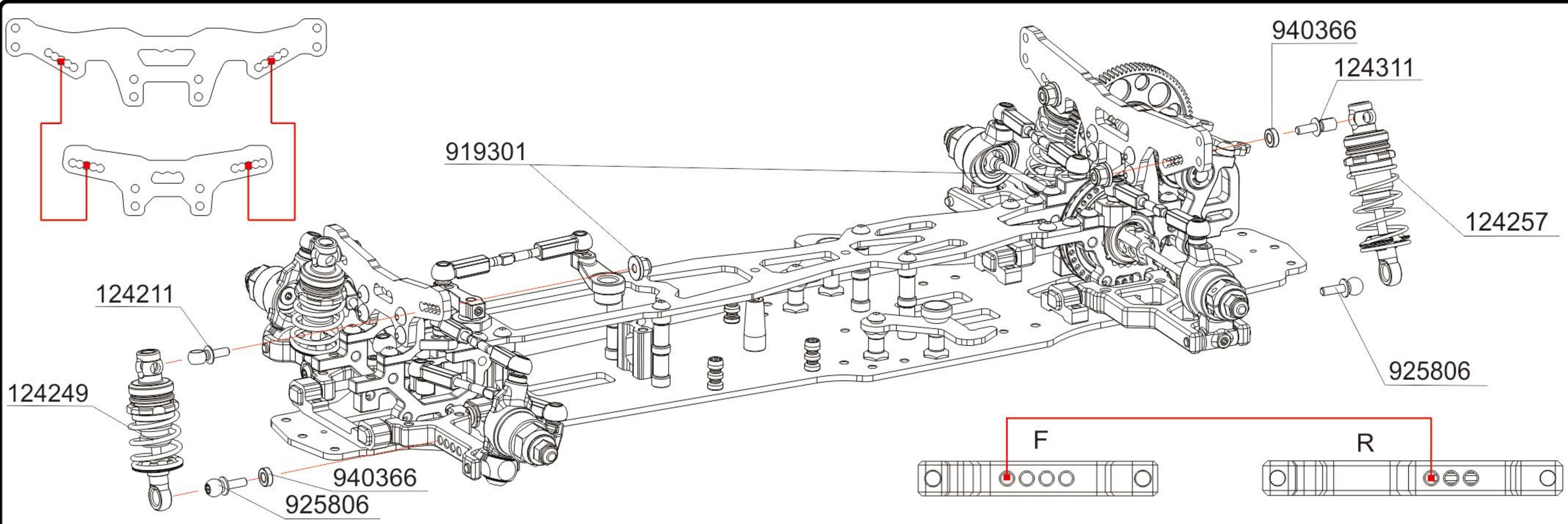














# 1/10ELECTRICTOURINGCAR



DRR-01

122127



CVD AXLE SHAFT-STRAIGHT

122006



CVD JOINT PIECE

160247



47MM

CVD DRIVE SHAFT SPRING STEEL

162147



47MM-3MM PIN

UNIVERSAL CVD DRIVE SHAFT SPRING STEEL

950347



47MM

FRONT ARM PIVOT PIN

950350



50MM

REAR SUSPENSION PIVOT PIN

122023



23MM

FRONT PIVOT PIN FOR C-HUB

122098



DIFF. PIN

920328 28MM  
920332 32MM  
920336 36MM



ADJ. TURNBUCKLE L/R -SPRING STEEL

920340



40MM

ADJ. TURNBUCKLE L/R 40MM-SPRING STEEL

122019



18MM

FRONT PIVOT PIN FOR C-HUB 3\*19

123001



STEEL STEERING BUSHING

123021 ■ ■



PULLEY HOLDER COLLAR

123022



ALU. FRONT PULLEY SHAFT

123023 ■ ■



ALU. SPUR GEAR HOLDER

123025 ■ ■



ALU. FRONT PULLEY SHAFT HOLDER

123027 ■ ■



BUMPER STANDOFF POST

123028 ■ ■



ALU. BATTERY STANDOFF POST

123029



BATTERY MOUNT SCREW BUSHING

123030



BATTERY MOUNT HANDLER

123031 ■ ■



ALU. CHASSIS STANDOFF POST

123033



BUMPER HEX SCREW

123040



WITH THE MOVING WHEEL SHAFT 5.0MM

123041



AFTER FLOODING BATTERY FIXING COLUMN



# 1/10ELECTRICTOURINGCAR



DRR-01

123804



4°

AFTER FLOODING 80 DEGREE TURN SEAT ABOUT 4 DEGREE COMPONENT

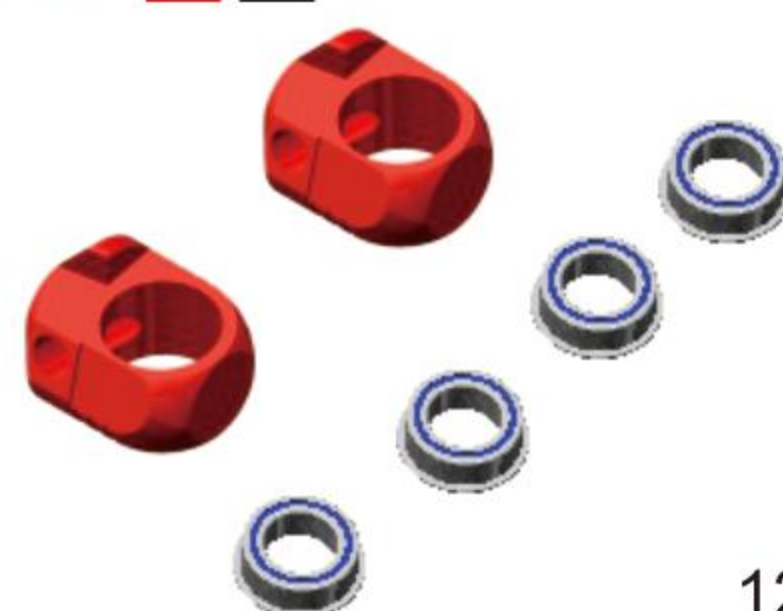
123808



8°

AFTER FLOODING 80 DEGREE TURN SEAT ABOUT 8 DEGREE COMPONENT

123812



12°

AFTER FLOODING 80 DEGREE TURN SEAT ABOUT 12 DEGREE COMPONENT

123816



16°

AFTER FLOODING 80 DEGREE TURN SEAT ABOUT 16 DEGREE COMPONENT

124003



12mm

SUPENSION SPRING RETAINER

124013



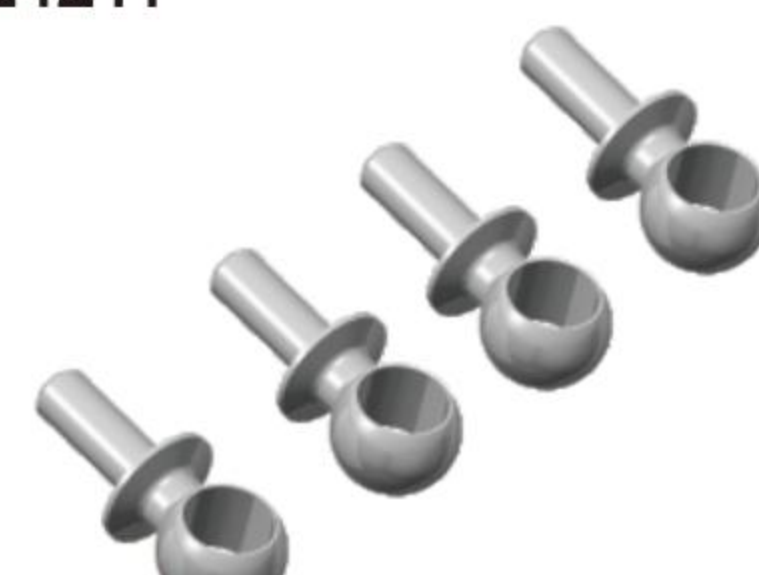
ALU SHOCK SPRING RETAINING COLLAR

124201



RAS-SHOCK CAP

124211



7mm

RAS-SHOCK CAP BALL END 5.9\*7MM

124311



10mm

RAS-SHOCK CAP BALL END 5.9\*10MM

124411



12mm

RAS-SHOCK CAP BALL END 5.9\*12MM

124239



39mm

RAS-SHOCK SHAFT 3X39MM

124247



47mm

RAS-SHOCK SHAFT 3X47MM

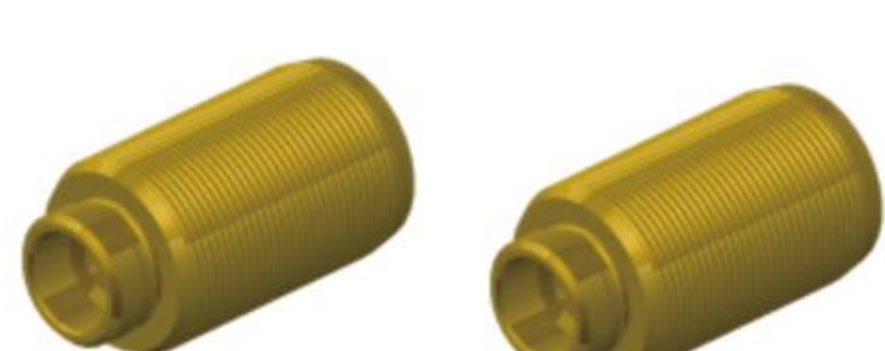
124318



12mm\*18mm

RAS-SHOCK BODY 12X18MM

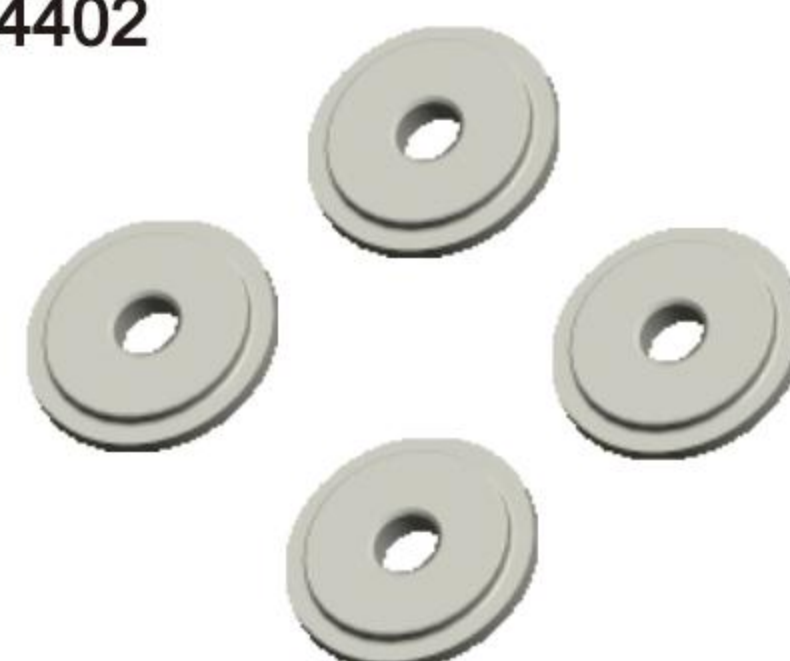
124322



12mm\*22mm

RAS-SHOCK BODY 12X22MM

124402



RAS-SHOCK TOP COVER

124403



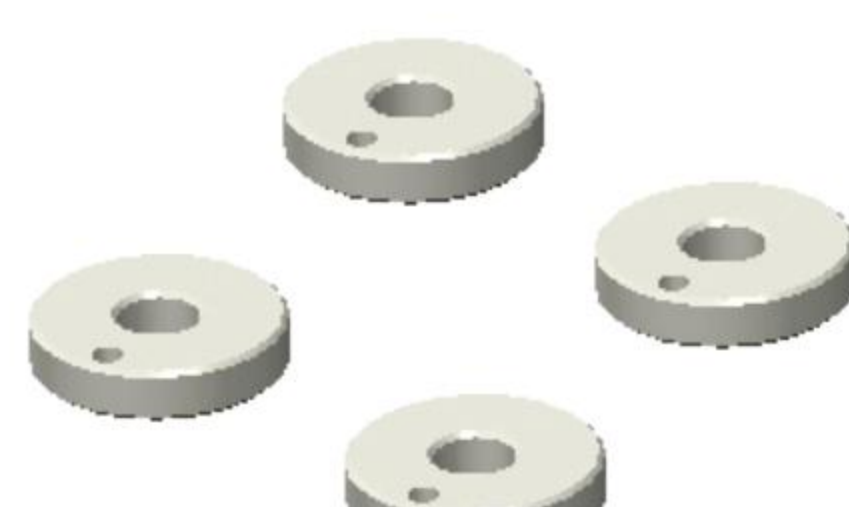
RAS-SHOCK BOTTOM COVER

124430



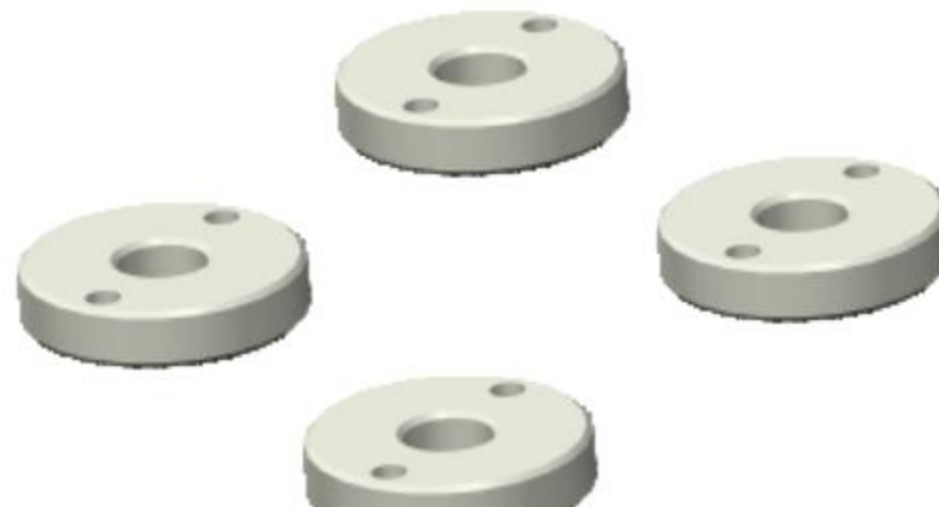
RAS-SHOCK PISTON (WITHOUT HOLE)

124431



RAS-SHOCK PISTON (1 HOLE)

124432



RAS-SHOCK PISTON (2 HOLE)

124433



RAS-SHOCK PISTON (3 HOLE)

124249



12mm\*49mm

REDUCEDAIRSHOCKER(49MM)

124257



12mm\*57mm

REDUCEDAIRSHOCKER(57MM)

124501



RAS-SHOCK HOLDER TOOL

125004



BEARING SLEEVE CLAMP -GT CAR -(L+R)



# 1/10ELECTRICTOURINGCAR



DRR-01

125012



OPTION ALU WHEEL HUB

125019



FRONT SOLID AXLE

125029



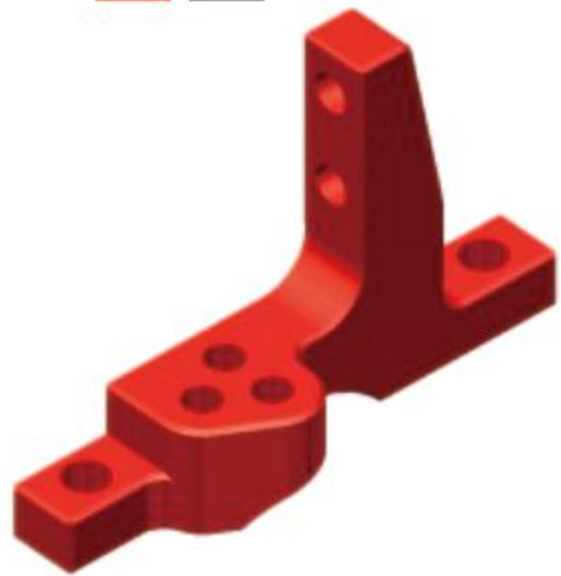
ALU SHOCK BOTTOM CAP

125041



ALU. UPPER CLAMP WITH ROLLING CENTER ADJ.(L)

125042



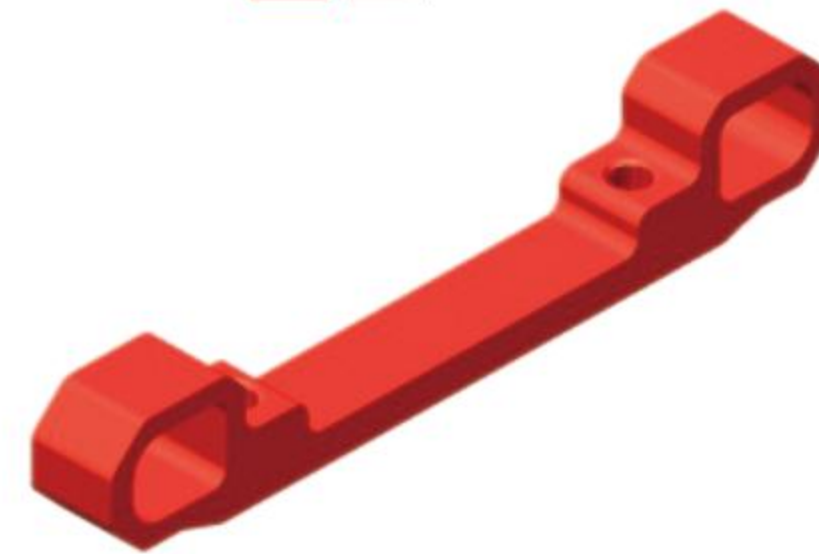
ALU. UPPER CLAMP WITH ROLLING CENTER ADJ.(R)

125043



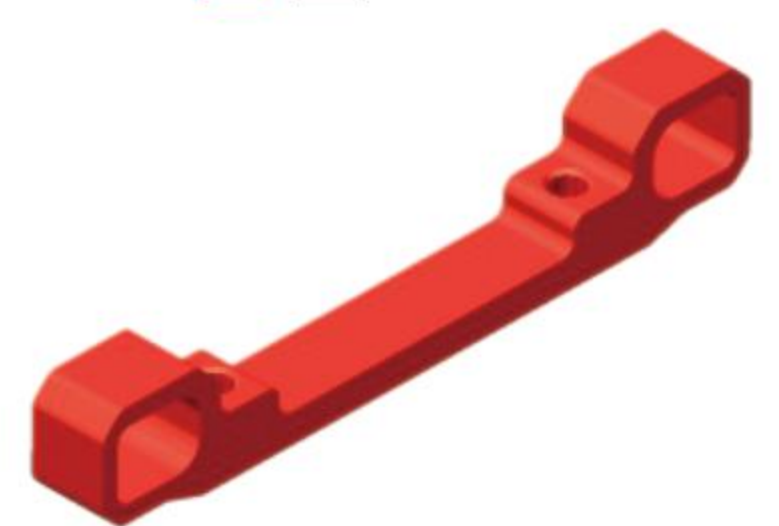
ALU. BULKHEAD

125106



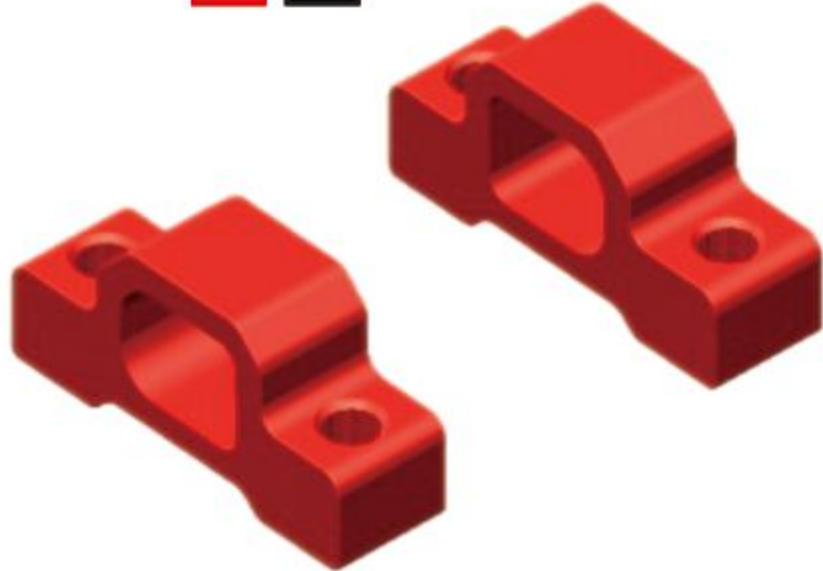
LOWER SUSPENSION HOLDER(FF)

125109



LOWER SUSPENSION HOLDER(RR)

125117



LOWER SUSPENSION HOLDER(FR-RF)

125301



AFTER FLOODING THE FRONT SEAT-6061T6

125302



AFTER FLOODING FRONT SUSPENSION ARM-6061T6

125303



AFTER FLOODING STEERING ARM 18mm-6061T6

125304



AFTER FLOODING ALU MOTOR MOUNT PLATE-6061T6

125305



AFTER FLOODING ALU SPUR GEAR SHAFT MOUNT-6061T6

125306



AFTER FLOODING LOWER STEERING ARM-6061T6

125307



AFTER FLOODING REAR COLLISION-6061T6

125313



AFTER FLOODING REAR SUSPENSION ARM-6061T6

125308



AFTER FLOODING INTERMEDIATE STEERING SEAT ASSEMBLY

125311



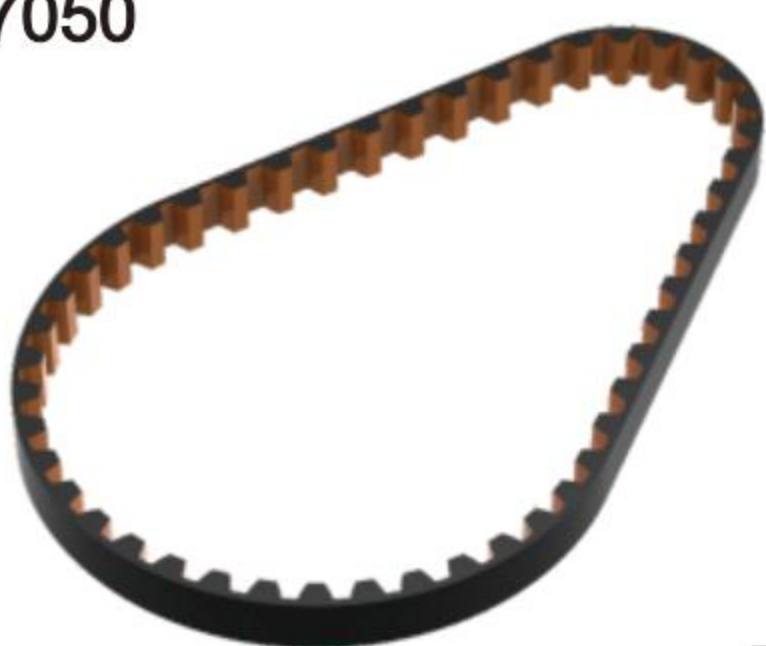
AFTER FLOODING STEERING COLUMN -6061T6

125312



AFTER FLOODING BUMPER STANDOFF POST

127050



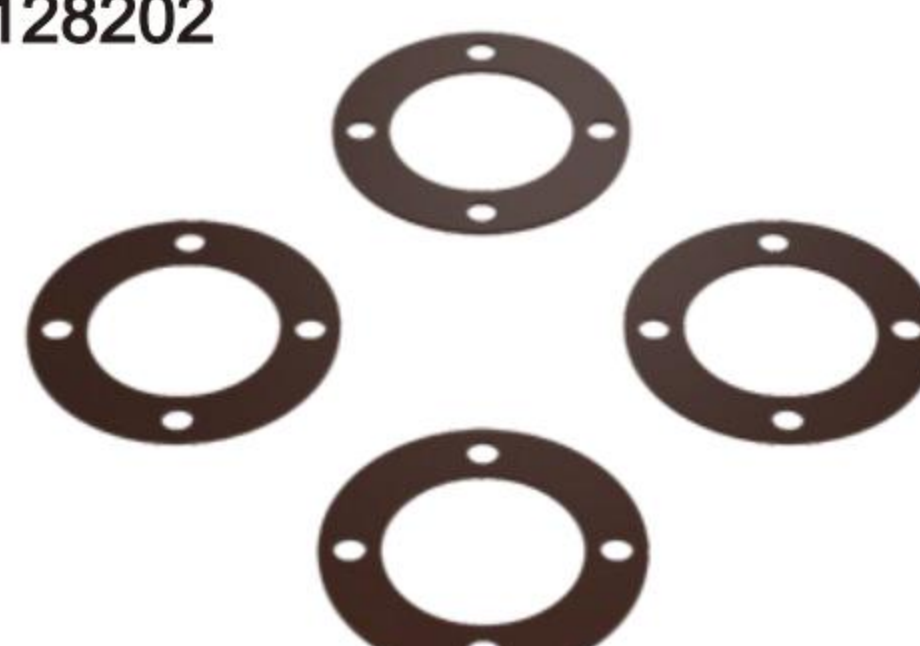
SYNCHRONOUS BELT SHORT

127250



SYNCHRONOUS BELT SHORT

128202



DIFF GASKEL

128210



AFTER FLOODING FOAM BUMPER



# 1/10ELECTRICTOURINGCAR

**D1**  
DRIFT CAR

**DRR-01**

128137



30 40MM  
GRAPHITE

FAN MOUNT HOLDER

128237



30MM  
GRAPHITE

FAN MOUNT HOLDER30MM

128411



GRAPHITE

AFTER FLOODING CHASSIS 2.2MM GRAPHITE

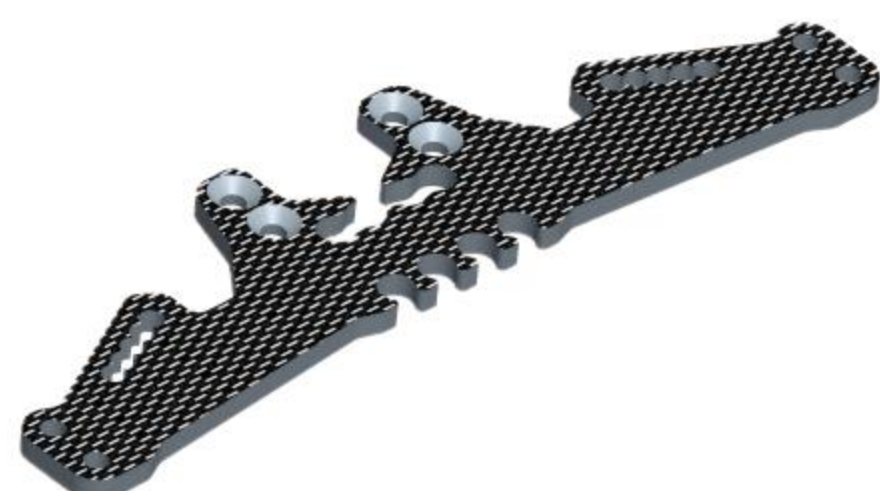
128413



GRAPHITE

AFTER FLOODINGB SHOCK TOWER(REAR)3.0MM GRAPHITE

128412



GRAPHITE

AFTER FLOODING SHOCK TOWER(REAR)3.0MM GRAPHITE

128414



GRAPHITE

AFTER FLOODING UPPER DECK GRAPHITE 2.2MM

128416



GRAPHITE

AFTER FLOODING BATTERY HOLDER PLATE 96 GRAPHITE

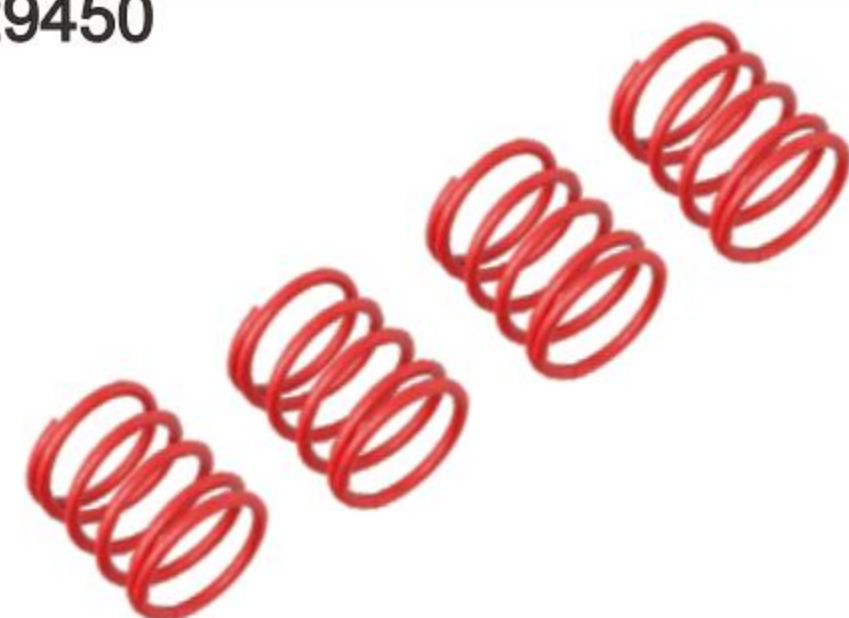
128417



GRAPHITE

AFTER FLOODING COMPOSITE UPPER HOLDER FOR BUMPER 2.2MM GRAPHITE

129450



3.5KG

1.4\*21\*5.0 SUSPENSION SPRING RD

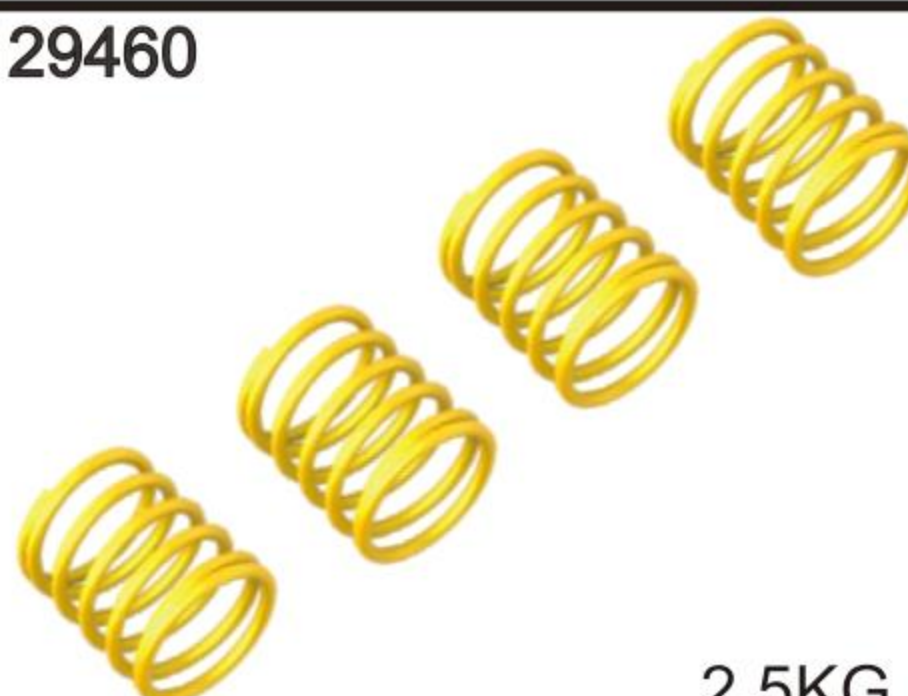
129455



3.0KG

1.4\*21\*5.5 SUSPENSION SPRING SR

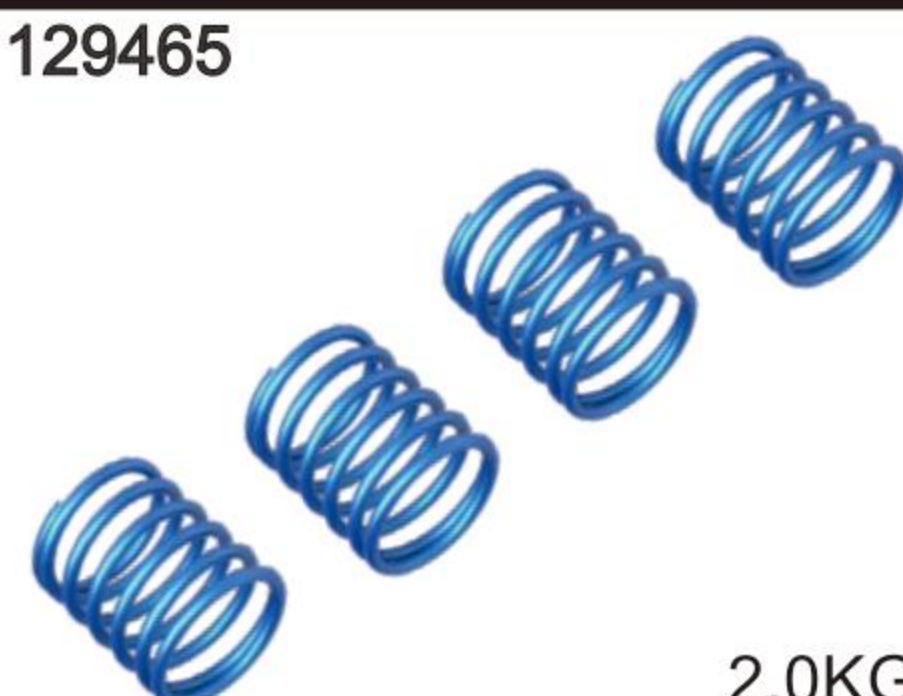
129460



2.5KG

1.4\*21\*6.0 SUSPENSION SPRING YE

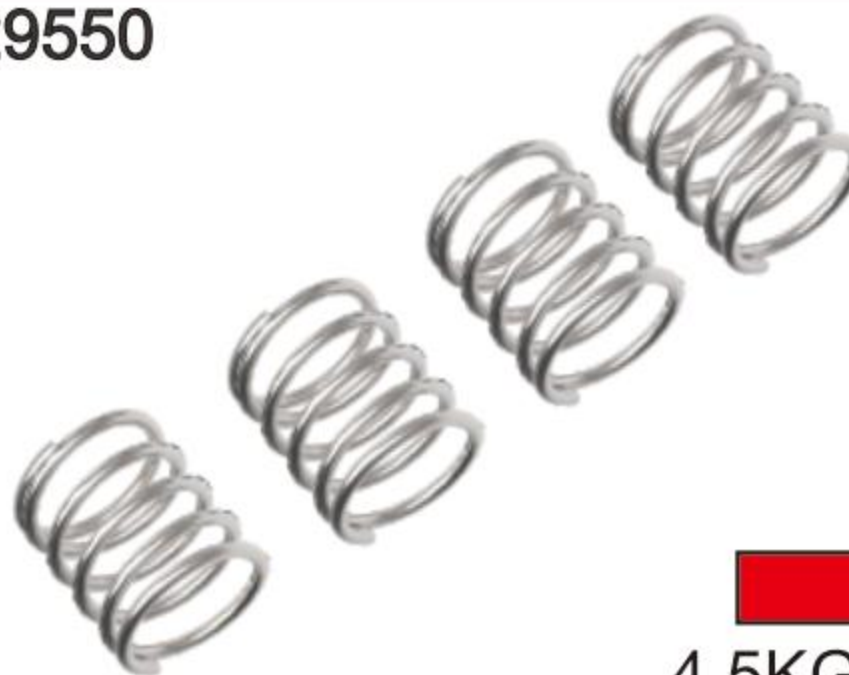
129465



2.0KG

1.4\*21\*6.5SUSPENSION SPRING BL

129550



4.5KG

1.5\*21\*5.0 SUSPENSION SPRING RD

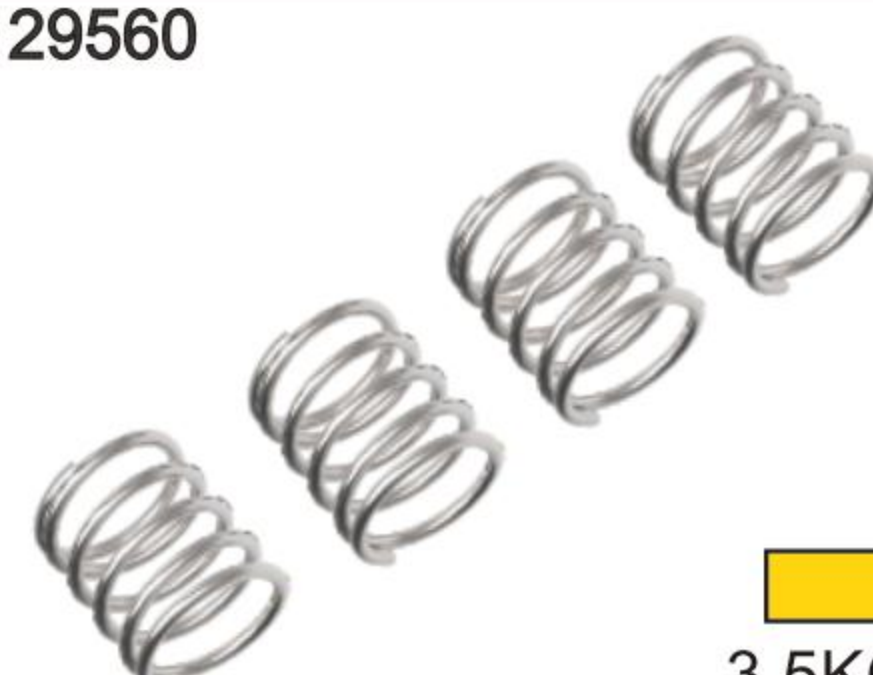
129555



4.0KG

1.5\*21\*5.5 SUSPENSION SPRING SR

129560



3.5KG

1.5\*21\*6.0 SUSPENSION SPRING YE

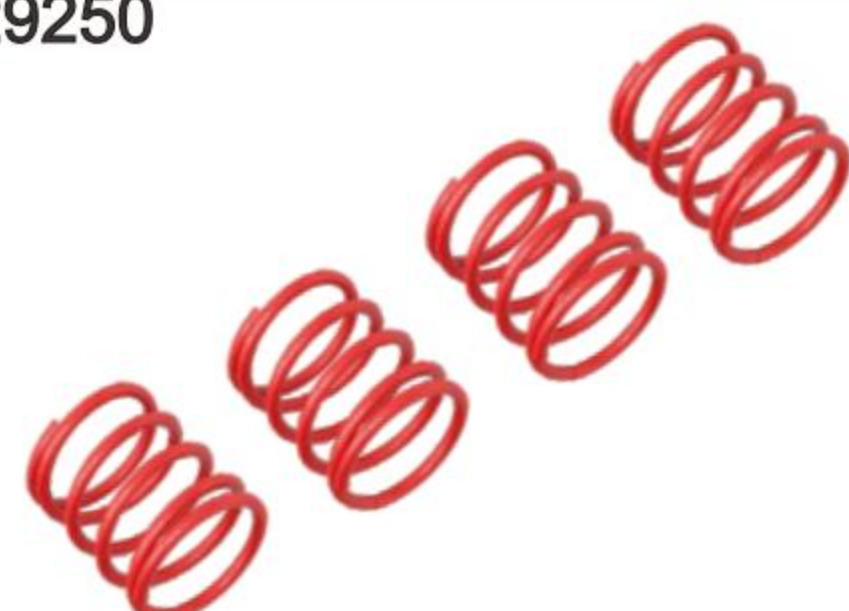
129565



3.0KG

1.5\*21\*6.5SUSPENSION SPRING BL

129250



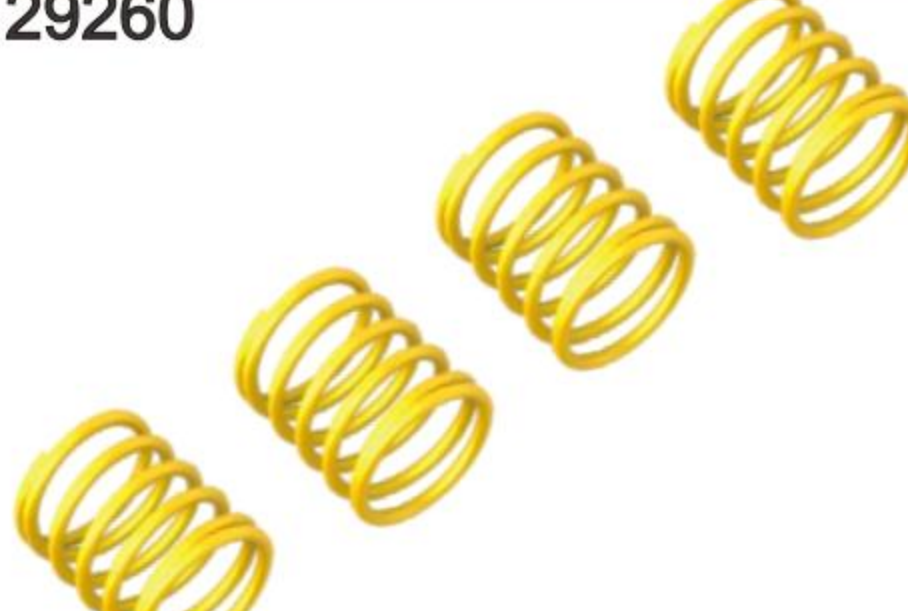
1.2\*21\*5.0 SUSPENSION SPRING RD

129255



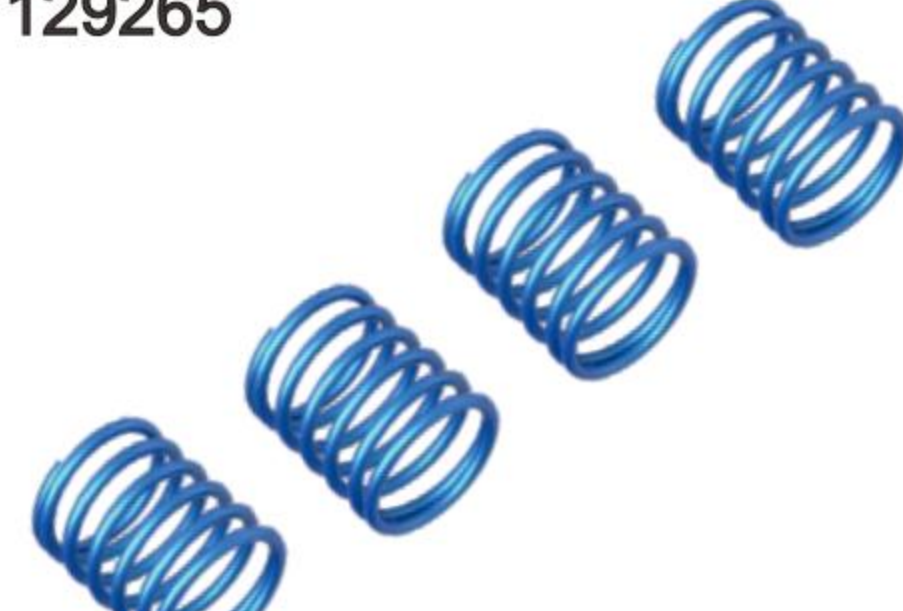
1.2\*21\*5.5 SUSPENSION SPRING SR

129260



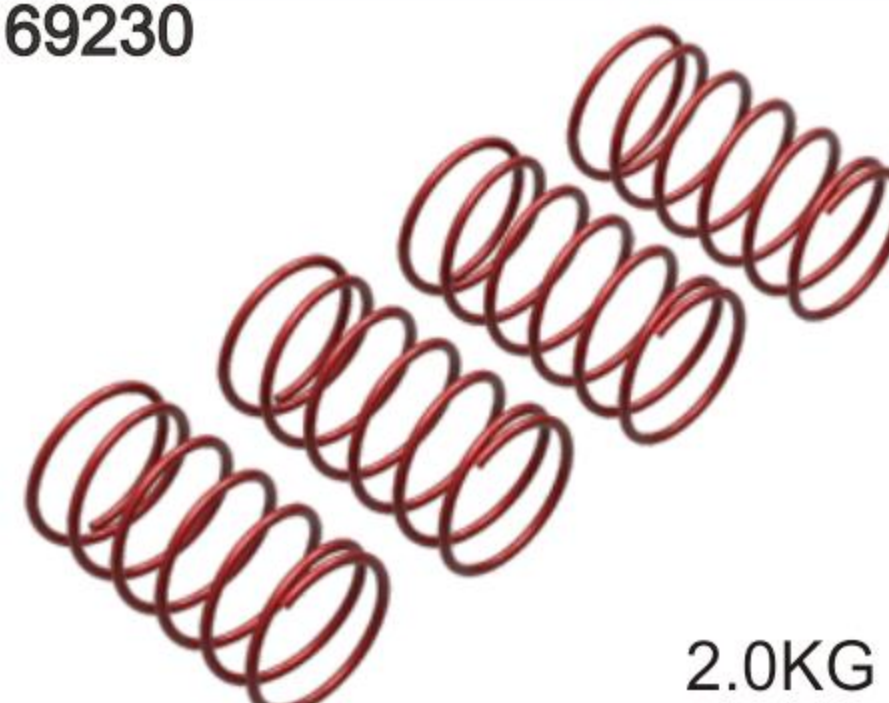
1.2\*21\*6.0 SUSPENSION SPRING YE

129265



1.2\*21\*6.5SUSPENSION SPRING BL

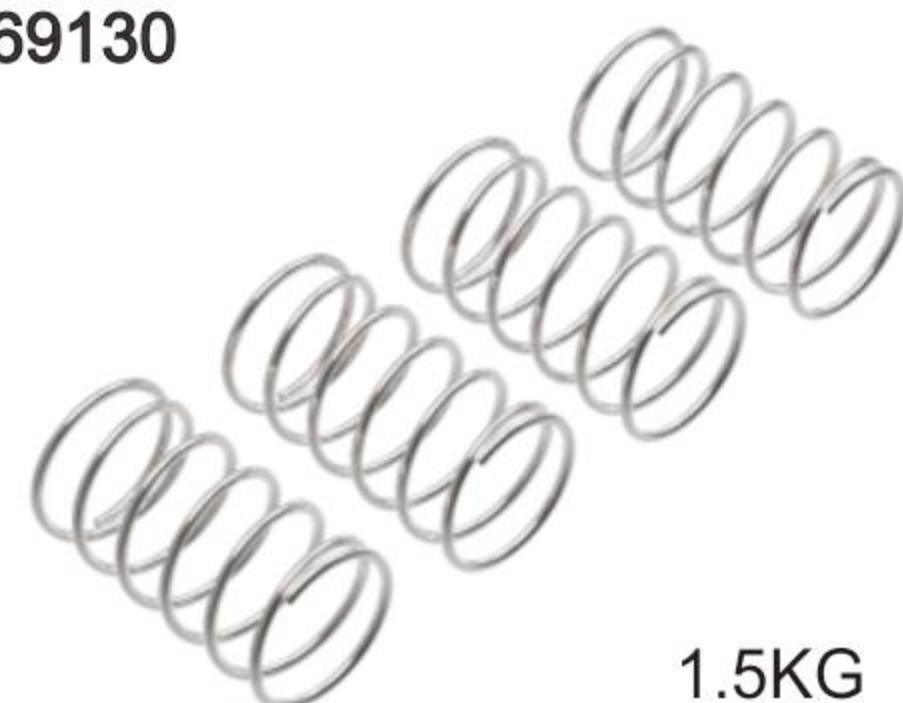
169230



2.0KG

1.2\*6.5\*30 SUSPENSION SPRING RD

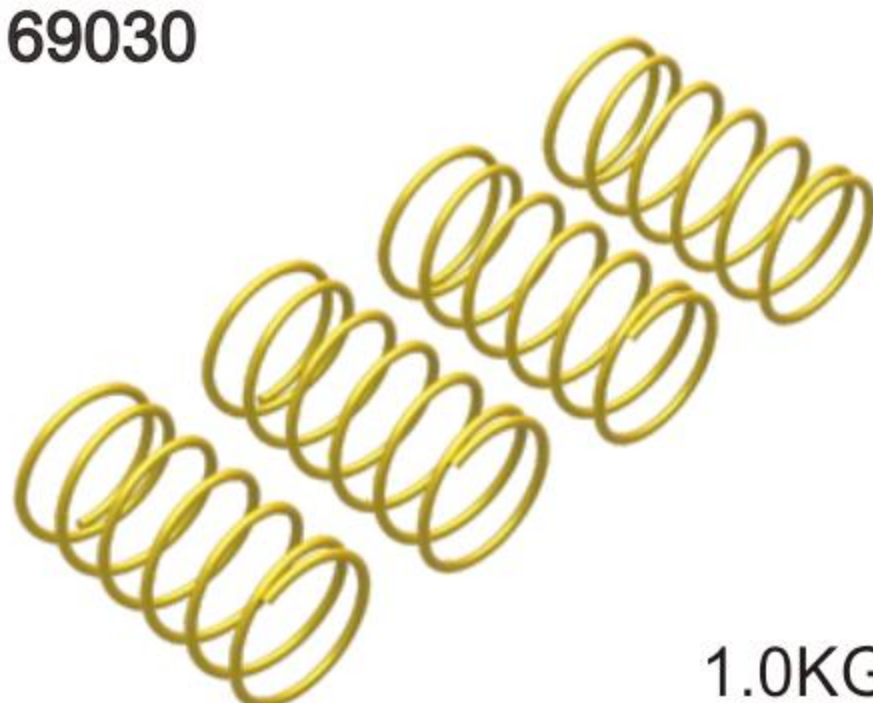
169130



1.5KG

1.1\*6.5\*30 SUSPENSION SPRING SR

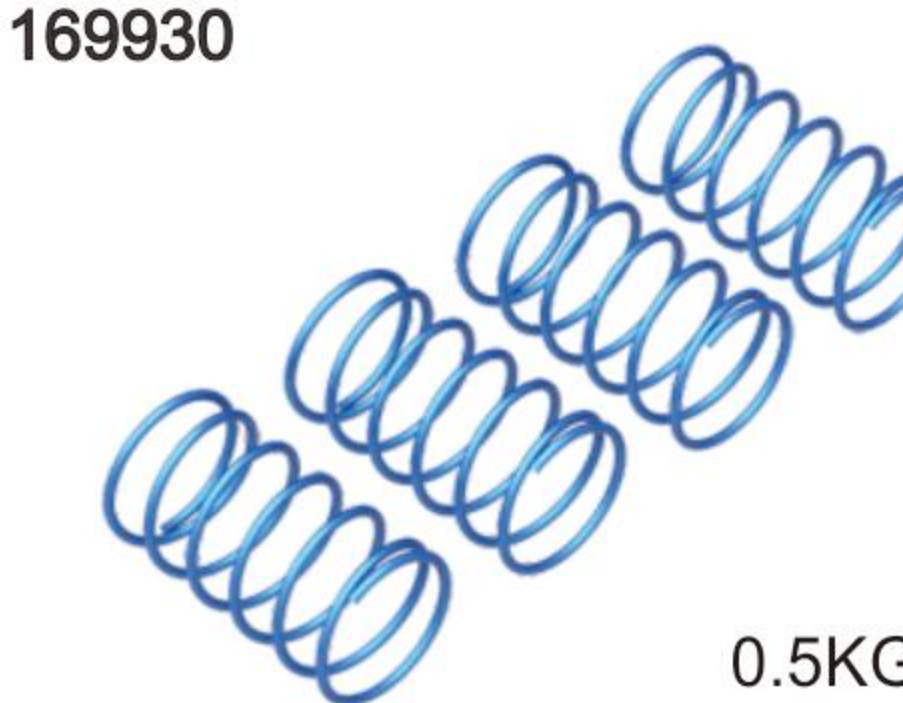
169030



1.0KG

1.0\*6.5\*30 SUSPENSION SPRING YE

169930



0.5KG

0.9\*6.5\*30 SUSPENSION SPRING RD



# 1/10ELECTRICTOURINGCAR

**D1**  
DRIFT CAR

**DRR-01**

160131 



3.1 S2

FRONT SOLID AXLE SET-SPRING STEEL

163130



3.1 S2

UNIVERSAL CVD DRIVE SHAFT-STEEL

163131



3.1 S2

FRONT SOLID AXLE SPOOL OUTDRIVE-SPRING STEEL

161112



METAL GEAR

OPTIONAL GEAR DIFFERENTIAL - SET

161113



GEAR DIFFERENTIAL - SET

121011



BODY SUPPORT

121014



FF  
FFV2

COMPOSITE BUMPER

121022



REAR BODY MOUNT SET

161024



71MM LENGHT

REAR BODY MOUNT SET

121023



BODY SUPPORT

121032



COMPOSITE UPRIGHT REAR

121067



COMPOSITE GEAR DIFF. CASE & COVER

121063



TIMING BELT PULLEY 38T

121068-WH



FIXED PULLEY 18T (POM)

121068



FIXED PULLEY 18T

121065-WH



FIXED PULLEY 20T (POM)

121065



FIXED PULLEY 20T

121096



COMPOSITEADJUSTMET BALL-BEARING HUB

121058



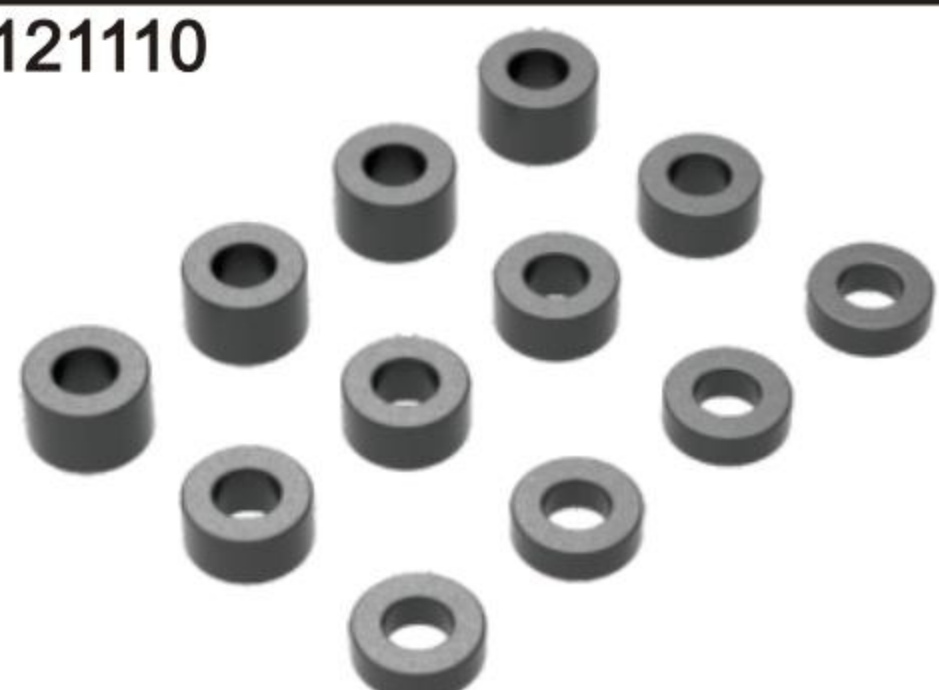
SHOCK BALL JOINT

121249



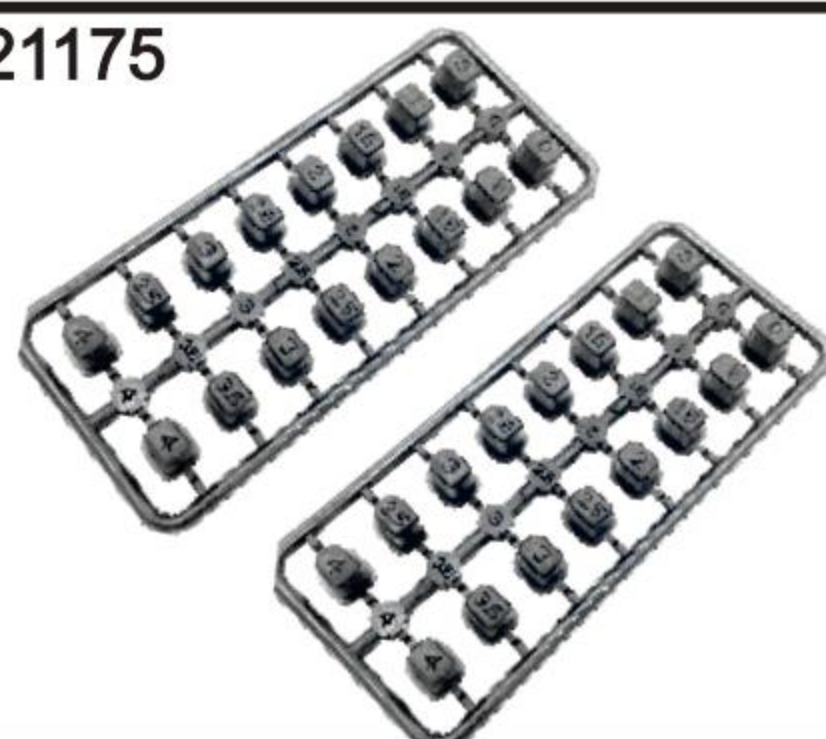
COMPOSITE BALL JOINT 4.9MM- CLOSEDWITH HOLE

121110



COMPOSITE SHIM

121175



SUSPENSIONMOUNTINSERT

121831



AFTER FLOODING ABOUT-8 DEGREES INCLINATION STEERING CUP

094084



SPUR GEAR 84T/48P



# 1/10ELECTRICTOURINGCAR



DRR-01

994084-WH



SPUR GEAR 84T/48P POM

994072



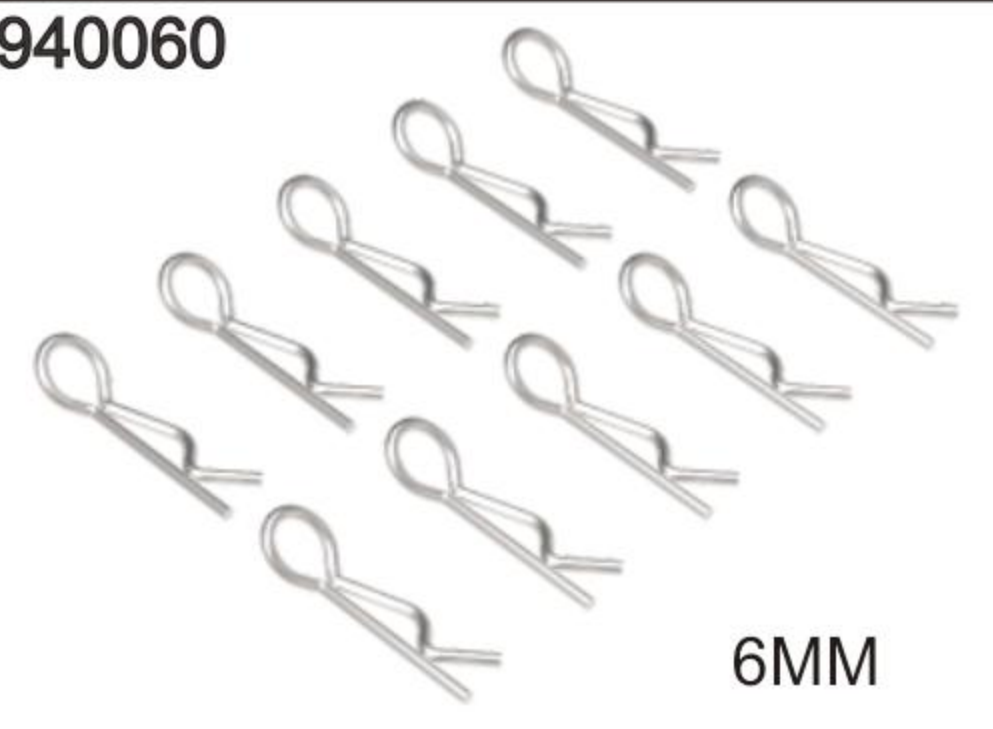
SPUR GEAR 72T/48P

994018 18T  
994019 19T  
994020 20T  
994021 21T  
994022 22T  
994023 23T  
994024 24T  
994025 25T  
994026 26T  
994027 27T  
994028 28T  
994029 29T  
994030 30T



PINON GEAR ALU HARD COATED(48P)

940060



BODY CLIP

990111



PLANETARY GEAR SET - HARD COATED

990110



PLANETARY GEAR SET - PLASTIC

960615



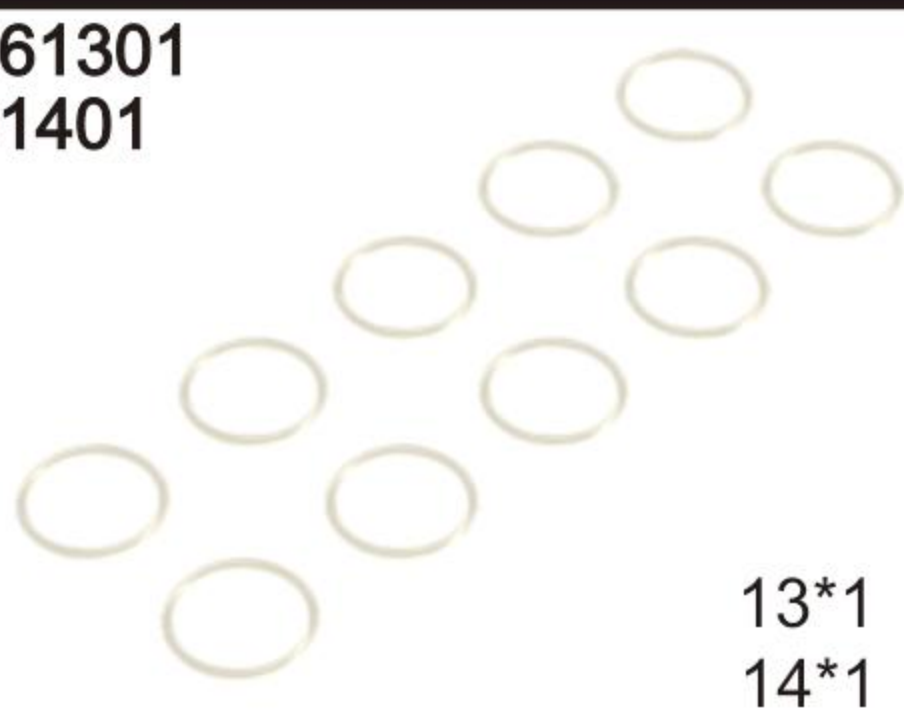
SILICONE O-RING 6X1.5

960702  
960902



SILICONE O-RING 7/9X2

961301  
91401



RAS-SHOCK UPPER O-RING (13/14X1MM)

924900



PIVOT BALL 4.9MM DOUBLE BELVE SHOULDERS

924901



4.9MMTRIPPING BALL HEAD-STEEL

924904



BALL END 4.9MM WITH THREAD 4MM

924906



BALL END 4.9MM WITH THREAD 6MM

924908



BALL END 4.9MM WITH THREAD 8MM

924910



BALL END 4.9MM WITH THREAD 10MM

925800



BALL UNIVERSAL 5.8MM HEX

925801



BALL UNIVERSAL 5.8MM HEX

925806



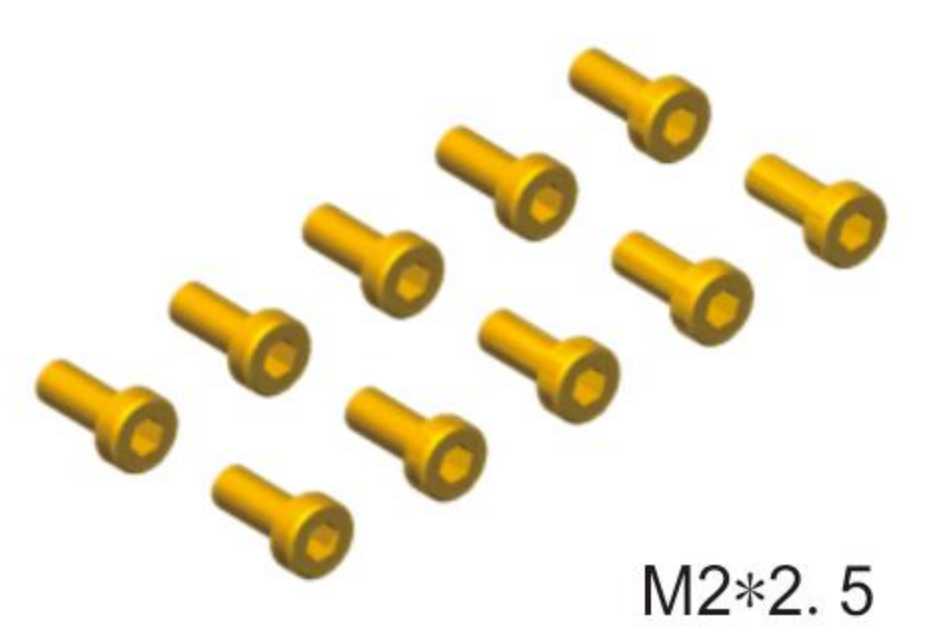
BALL END 5.8MM WITH THREAD 6MM

925808



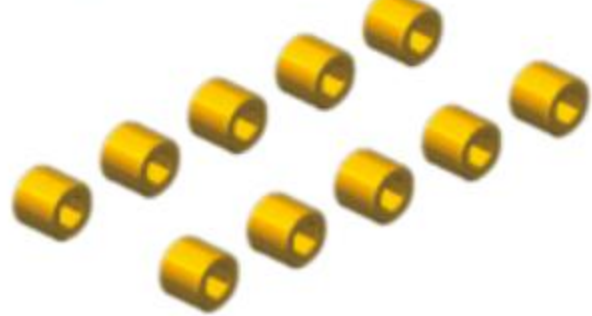
BALL END 5.8MM WITH THREAD 8MM

916205-GD



HEX SOCKET CAP SCREWS M2X5

915325-GD M3\*2.5  
915304-GD M3\*4  
915310-GD M3\*10  
915314-GD M3\*14  
915408-GD M4\*8



HEX SET SCREW

918258-GD M2.5\*8  
918112-GD M2.5\*12  
918306-GD M3\*6  
918308-GD M3\*8  
918310-GD M3\*10  
918312-GD M3\*12  
918414-GD M4\*14



HEX SCREW ROUND HEAD M3X8

917210-GD M2\*10  
918256-GD M2.5\*6  
918304-GD M3\*4  
918305-GD M3\*5  
918306-GD M3\*6  
918308-GD M3\*8  
918310-GD M3\*10  
918312-GD M3\*12  
918414-GD M4\*14  
918416-GD M4\*16



HEX SCREW FALT HEAD M3X8

910103-GD

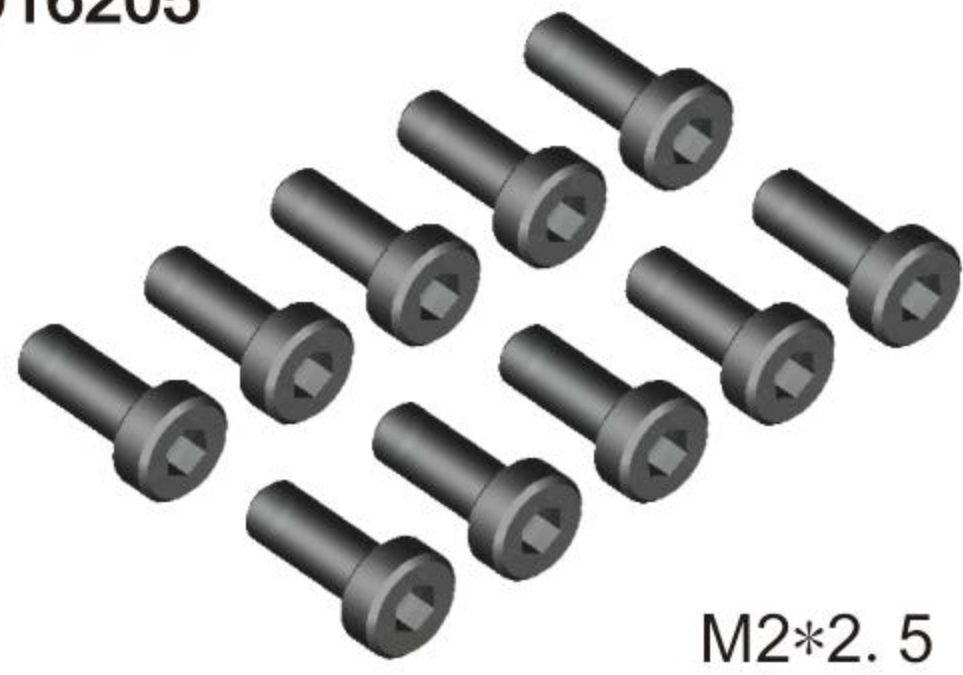


WHOLE CAR SCREW



# 1/10ELECTRICTOURINGCAR

916205



M2\*2.5

HEX SOCKET CAP SCREWS M2X5

915325 M3\*2.5  
915304 M3\*4  
915310 M3\*10  
915314 M3\*14  
915408 M4\*8



HEX SET SCREW

918258 M2.5\*8  
918112 M2.5\*12  
918306 M3\*6  
918308 M3\*8  
918310 M3\*10  
918312 M3\*12  
918414 M4\*14



HEX SCREW ROUND HEAD

917210 M2\*10  
918256 M2.5\*6  
918304 M3\*4  
918305 M3\*5  
918306 M3\*6  
918308 M3\*8  
918310 M3\*10  
918312 M3\*12  
918414 M4\*14  
918416 M4\*16



HEX SCREW FALT HEAD

910103



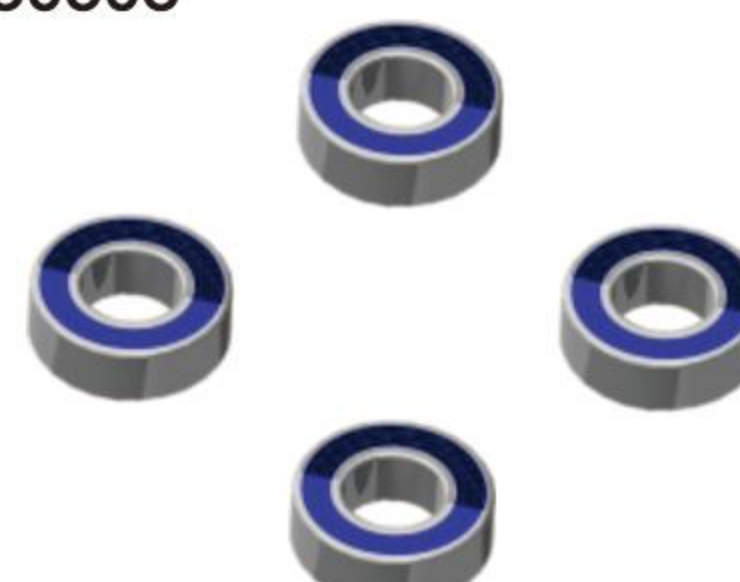
WHOLE CAR SCREW

R030508



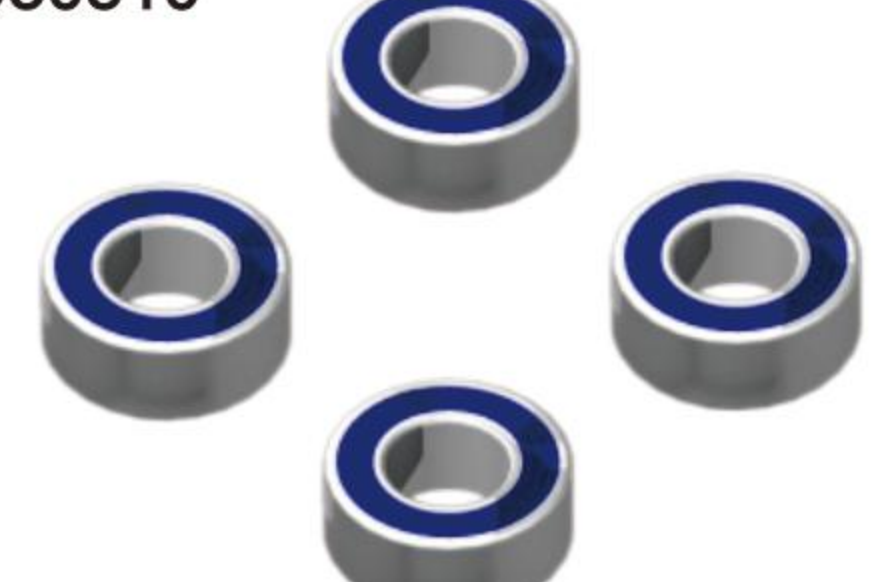
BALL-BEARING 5X8X2.5 FLANGED

R030508



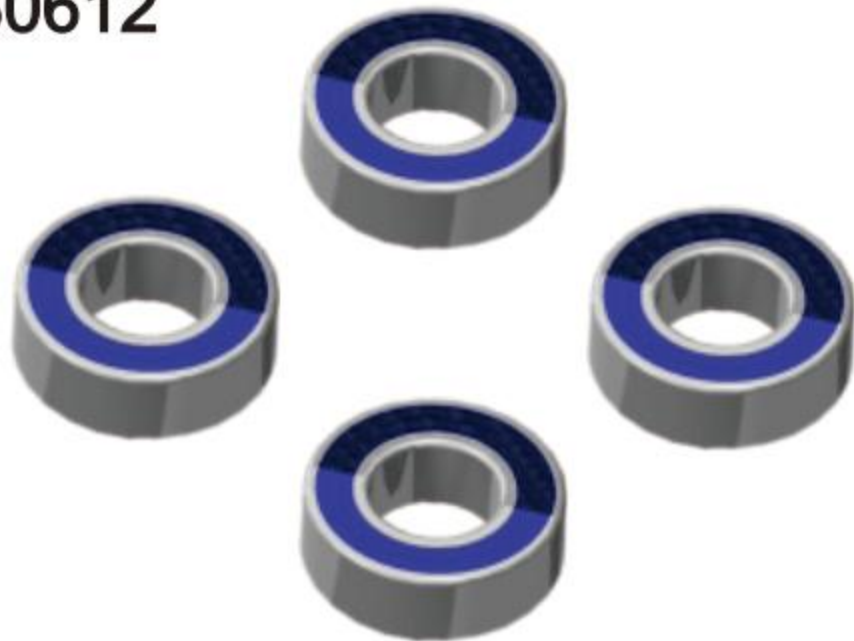
BALL-BEARING 5X8X2.5

930510



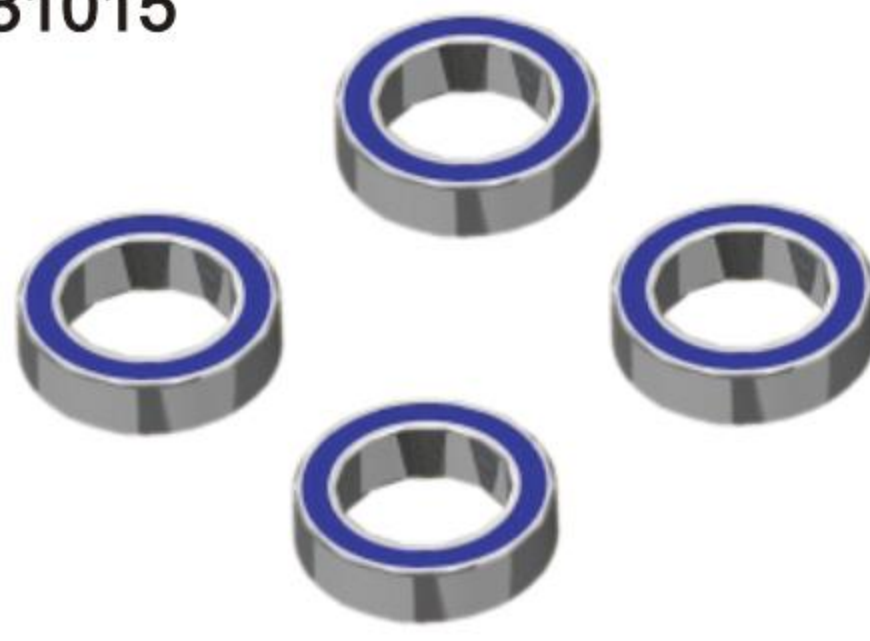
BALL-BEARING 5X10X4

930612



BALL-BEARING 6X12X4

931015



BALL-BEARING 10X15X4

930102



WHOLE VEHICLE BEARING

919300



NUT M3

919301  
919401



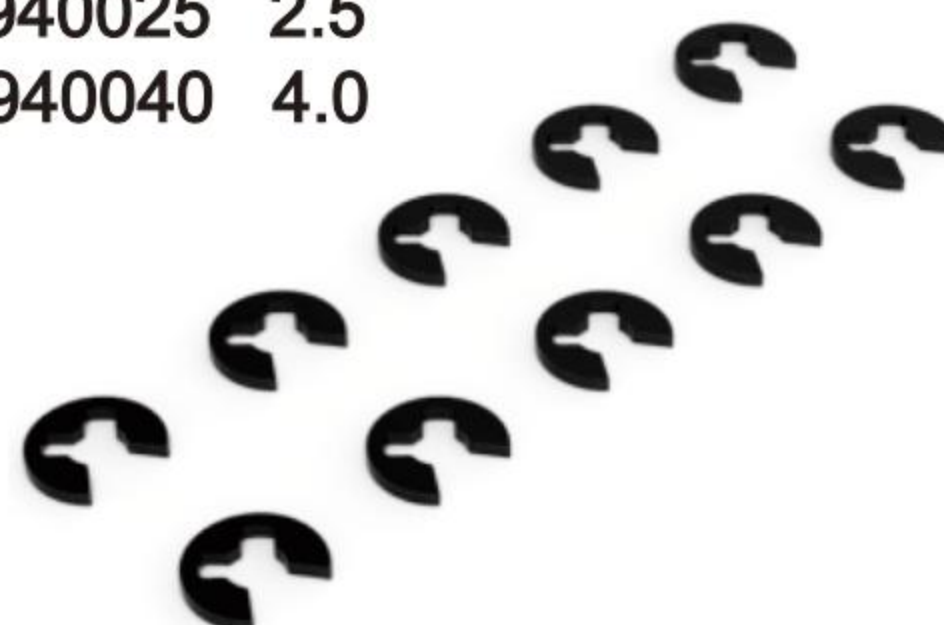
NUT M3/4 WITH SERRATED FLANGE

919402



ALU WHEEL LOCK NUT M4

940025 2.5  
940040 4.0



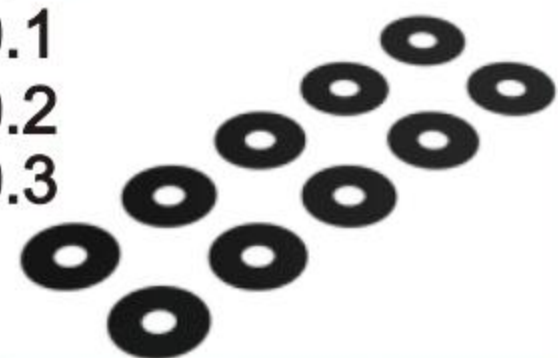
E-CLIP

950209 2\*9  
950210 2\*9.8  
950212 2\*12  
950312 3\*12



PIN

940373 3\*7\*0.3  
940375 3\*7\*0.5  
943592 3.5\*9\*0.2  
943593 3.5\*9\*0.3  
943594 3.5\*9\*0.4  
945121 5\*12\*0.1  
945122 5\*12\*0.2  
945123 5\*12\*0.3



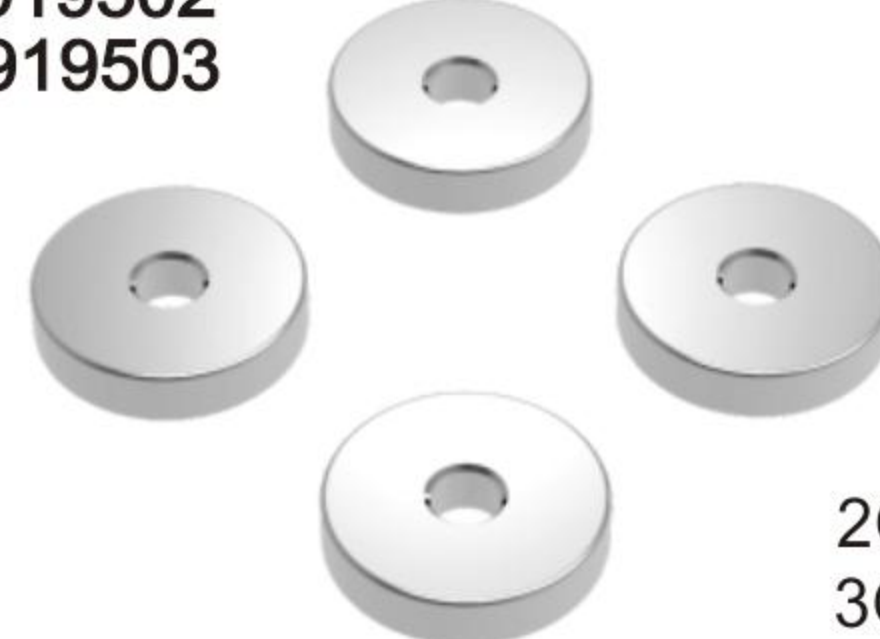
WASHER S

940361 3\*6\*1  
940362 3\*6\*2  
940363 3\*6\*3  
940364 3\*6\*4  
940365 3\*6\*5  
940366 3\*6\*1.5



ALU WASHER

919502  
919503



ROUND SHAPE BALANCE WEIGHT

919505  
919510



ROUND SHAPE BALANCE WEIGHT

900100



THE DIFFERENTIAL OIL

900050



SHOCK ABSORBER OIL

909001



GRAPHITE OIL



